



SEED DRILL
DS610/1100/1400



Send us back the guarantee certificate within 15 days with the invoice copy.





GUARANTEE RECLAMATION FORM N°

To be returned on reception of the machine

Dealer
Name
Address
Tel
Code Nb

Owner
Nom
Address
Tel

Type of machine	
Working width	
Serial number of the machine	
Delivery date to the user's place (join a copie of invoice and dealer's delivery note)	
Tractor description and horse power	
Type of soil, clay %	
Surface area of farm	

Date : / /

Customer's signature and client's stamp

Dealer's signature and dealer's stamp

We are fully aware of, and accept, the contents of the instruction manual and we hereby adhere to the clauses of the guarantee.

DECLARATION OF CONFORMITY TO « MACHINE » REGULATIONS

		AGRISEM® INTERNATIONAL	
"Beaucé" F - 44850 LIGNÉ - Tél. 33 (0)2.40.77.40.48 Fax. 33 (0)2.40.77.45.45			
<input type="radio"/> MODEL	<input type="text"/>		<input type="radio"/>
SERIAL N°	<input type="text"/>		
Material manufactured under licence			

The above-named constructor certifies that the hereby designated new material:

DISC-O-SEM

conforms to the dispositions of the modified "machines" regulations (regulation 98/37/CE) and the national legislations transposed.

Signed in Ligné

25th January 2008



Michel EVIN
Managing Director

TABLE OF CONTENTS

TABLE OF CONTENTS.....	1
INTRODUCTION.....	3
A - GUARANTEE CONDITIONS	4
B – CORRECT USE OF THE MACHINE.....	7
C – SAFETY INSTRUCTIONS.....	8
D – GENERAL SAFETY RULES	10
E– USING OF THE DISC-O-SEM.....	11
1. DESCRIPTION.....	11
2. PREPARATION FOR USE.....	11
3. COUPLING-UP TO THE TRACTOR.....	11
4. ADJUSTMENTS.....	11
5. MAINTENANCE AND REPAIR.....	11
6. ADVISE FOR OPTIMAL USE	13
F– PREPARATION TO USE.....	15
1. DOSING MECHANISM.....	15
2. DOSAGE	16
3. SOWING CONTROL	17
4. DOSAGE TEST	17
5. MAINTENANCE.....	18
5.1. OILING.....	18
5.2. ANTICORROSIVE CONTROL.....	18
5.3. OIL	18
6. DOSAGE TABLE FOR DS1100.....	19
SEED DOSAGE TABLE (Kg / ha).....	19
7. DOSAGE TABLE FOR DS1400.....	20
SEED DOSAGE TABLE (Kg / ha).....	20

D – SPARE PARTS.....	22
SEED DRILL DS610	23
KIT HOPPER DS610	25
DISTRIBUTION KIT DS610	27
VARIATOR KIT DS610	29
DISTRIBUTION LINE DS610	31
 E – SPARE PARTS DS1100	 41
SEED DRILL DS1100	35
KIT HOPPER DS1100	37
DISTRIBUTION KIT DS1100	39
VARIATOR KIT DS1100	41
DISTRIBUTION LINE DS1100	43
 F– SPARE PARTS DS1400	 46
SEED DRILL DS1400	47
KIT HOPPER DS1400	49
DISTRIBUTION KIT DS1400	51
VARIATOR KIT DS1400	53
 SPARE PARTS COMMON FOR ALL MECHANICAL SEED DRILLS	 56
KIT SUN WHEEL ARM	57
KIT GANGWAY DS610/1100	59
KIT GANGWAY DS1400	61
KIT SMALL SEED CHAMBER	63
KIT HYDRAULIC FIELD MARKING	65
KIT VARIATOR DRIVE CHAINE DS610/1100	67
KIT VARIATOR DRIVE CHAINE DS1400	69
KIT TENSION PULLEY ARM	71
KIT CARTER FIXING	73

INTRODUCTION

You must send us back the guarantee certificate within 15 days from receiving by the final user.

You are the owner of a **DISC-O-SEM**. This machine has been designated to give you complete satisfaction.

This equipment is the result of research into new solutions aimed at reducing costs.

In order to get the most out of your **DISC-O-SEM**, please read your manual with care and follow, the maintenance and adjustment advice carefully.

Your dealer remains at your disposal for information on any particular point, so please don't hesitate to contact him.

In the interest of improvement, **AGRISEM INTERNATIONAL** reserves the right to modify their products, but in so doing they are not under obligation to reproduce these modifications on existing models.

Likewise, characteristics in this manual can be modified without notice and adjustment procedures and subsequent use, which is indicative, can not be under our responsibility.

A - GUARANTEE CONDITIONS

These guarantee conditions are only applicable to **machines exclusively equipped with original AGRISEM INTERNATIONAL parts**, « Beaucé », 44850 LIGNE, FRANCE; they are as follows:

APPLICATION PERIOD

- If a fault is noticed on any structural part of the machine within the **6 months** following delivery and if this fault is due to a raw material defect or due to fabrication procedures at the factory. The parts presumed faulty should be returned to the company for appraisal.

Proof of delivery:

- The date on the delivery note and on the invoice.
- The return of the guarantee card within 15 days of delivery (signed and stamped by the dealer and the owner).

MACHINES AND PARTS CONCERNED

- As concerns the guarantee, the term "Machine" is designated exclusively for new machines and parts manufactured by AGRISEM INTERNATIONAL. It does not include outside components such as tyres, flexible hydraulic tubes etc even though these parts are also provided by the company.
- **The guarantee will be rendered null and made void if any modifications are carried out on the machine without the formal agreement of AGRISEM INTERNATIONAL or if parts other than those produced by the company are used on the machine (eg. Counterfeit parts).**

GUARANTEE EXTENT

- The guarantee is limited to refunding or repair of the faulty parts with material and metal-working defects in our factory and by our technical service.
- Costs relating to dismantling and replacement of the faulty part are not covered by the guarantee nor are the transport costs for the machines or machine-parts to the repair site and back.

PRE-REQUEST

The maintenance and use of the machine have to conform to indications of the User's Manual.

All the security measures mentioned in this User's Manual and the User's Manuals for the complementary equipment have to be respected.

All the protection and safety components as well as dangerous parts (e.g. shock-absorber) have to be routinely inspected and replaced if necessary.

EXCEPTIONS OF THE GUARANTEE

- Naturally the guarantee does not apply to :
 - Faults due to wear and tear, misuse, lack of maintenance
 - Accident-damage or use not consistent with usual functions.
 - Faults due to the downtime of the machine

- Damage incurred during transport and manipulation by whichever Transport Company. It is the addressee who must act as necessary as regards the transporters in such a situation
- Damage caused by a breakdown of an instrument due to a defect or incident with the machine
- Complaints or injuries to the owner or a third person, nor the indirect consequences as a result

THE PROCEDURE OF THE APPLICATION OF THE GUARANTEE: TO BE IMPERATIVELY RESPECTED BY THE DEALER AND BY THE OWNER

The company's responsibility concerning the guarantee is dependent on the strict respect of the dealer and the user of the following regulations:

A) THE RETURN OF THE GUARANTEE CARD BY THE DEALER, DULY FILLED-IN AND SIGNED BY THE DEALER AND THE OWNER.

B) The recourse must imperatively be formulated on the AGRISEM INTERNATIONAL guarantee reclamation form (see the annex) and sent by the dealer to the company's technical service, by recorded delivery, with an acknowledgement of receipt, within a delay of 10 days following the incident. The reclamation form must be clearly filled in by the dealer and include the following information :

- Name and address of the dealer, client code,
 - Name and address of the owner,
 - Type of machine,
 - Working width,
 - Serial number of the machine,
 - Delivery date to the owner,
 - Date of the problem,
 - **Precise references of parts replaced, with invoice number and date,**
 - **Make and type of tractor used,**
 - Detailed description of presumed causes of incident,
 - Surface area worked by machine,
 - Surface area of farm,
 - Type of soil clay %,
 - Invoice for wearing parts as a proof
- | | | | | |
|------------------|--------------------------|-----|--------------------------|------------------------------|
| - stoney | <input type="checkbox"/> | yes | <input type="checkbox"/> | no |
| - replaced parts | <input type="checkbox"/> | yes | <input type="checkbox"/> | no (invoice copy to be sent) |
| - | | | | |

C) The parts presumed faulty should be returned to the company for appraisal along with a duplicate of the guarantee reclamation form as proof. The dealer has to order a new part to replace a defective one. The consecutive transport costs necessary to return the above-said parts are the responsibility of the sender.

D) The technical director or managing director of the company will make the final decision as regards the reclamation. This decision, regardless of the object of the guarantee appeal, is irreversible and the buyer must undertake to accept the decision regarding the defect, its replacement or that of certain parts. The Company salesmen are not competent to make such a decision and if they do so, it could be considered null and void.

NOTA: In case of refusal, the part remains at the disposition of the client for 8 days, after this delay it will be scrapped with no appeal possible.

The machine dealers have no right or power to take any decision whatsoever, on purpose or otherwise, in the name of the company

EXCLUSIVE RESPONSIBILITY CLAUSE

AGRISEM can not be held responsible if the user did not respect the safety instructions mentioned in this User's manual.

AGRISEM can not be held responsible for injuries to the owner or a third person, neither the indirect consequences as a result caused or non by the damage. The security distance of 50 m has to be respected anyway.

AGRISEM cannot be held responsible for damage caused by a breakdown of an instrument due to a defect or incident with the machine

TECHNOLOGICAL EVOLUTION

Concerned with the constant improvement of its products, AGRISEM INTERNATIONAL reserves the right to modify them, with no obligation of reproducing the improvements on existing models.

Furthermore, due to the constant evolution of techniques, no guarantee can be given as regards the description of materials in all documentation produced by the company.

Besides, the pictures presented in this document are not contractual because the machines and the parts might be slightly modified.

B – CORRECT USE OF THE MACHINE

The DISC-O-SEM produced by AGRISEM INTERNATIONAL must be only used for the work they are designed for.

STUBBLE-BREAKING OF ARABLE SOIL AND SEEDING IN STANDARD CONDITIONS

In the case of damage due to use of the machine for work outside the constructor's specifications, the constructor can not be held responsible.

The correct use of the machine also implies:

- The respect of regulations of use, maintenance and upkeep as stated by the constructor,
- Exclusive use of replacement parts, accessories and original equipment appointed by the constructor.

The DISC-O-SEM must only be used, maintained and repaired by people competent to do so, familiar with the characteristics and the way of using the machine. The above said people should be aware of the possible risks to which they are exposed.

The user must strictly comply with all regulations regarding:

- Accident prevention.
- Safety at work (labour laws).
- Driving on the road (Highway Code).

He has the obligation to observe all warnings placed on the machine. All modifications made by the user or any other person without the written agreement of the constructor disengages all responsibility of the constructor should damage result.

The sowing units were developed by AGRISEM INTERNATIONAL only for using with AGRISEM equipment. They can not be combined with other machines in any case. In such a case AGRISEM can not be held responsible for a material or non-material damage and/or injury.

C – SAFETY INSTRUCTIONS

Most accidents that happen while working, during maintenance or when displacing a machine are due to non-observance of elementary security regulations. Consequently, it is imperative that all people likely to work with this machine strictly respect the following fundamental rules and likewise the safety instructions stipulated on the stickers placed on the DISC-O-SEM.

1. Before every operation make sure that the DISC-O- SEM is on a stable surface.
2. This DISC-O- SEM was conceived for precise work, it must always be in perfect working condition and only repaired using original AGRISEM INTERNATIONAL parts.
3. All necessary precautions must be taken when adapting working parts that are heavy or sharp.
4. Verify that the personal safety is respected.
5. Verify tightness of screws and bolts before each use.
6. Verify that the DISC-O- SEM is coupled correctly.
7. Ensure that the tractor has sufficient ballast at the front before all work, in order to avoid any risk of tipping up; if necessary add ballast to the front of the tractor.
8. Distance all people from the manoeuvring area of the DISC-O- SEM.
9. Never transport anybody on the DISC-O- SEM or its complementary equipment during work or displacement.
10. Be aware of hidden obstacles (stones, roots, tubing, cable, etc) if an incident occurs, STOP IMMEDIATELY, and find the cause.

NB: If the obstacle is an electric cable or gas-line, alert the authorities competent to deal with it.

11. Never leave the tractor unless the DISC-O- SEM is resting on the ground, brakes on, motor off and the key out of the ignition.
12. Never adjust or repair anything unless the tractor motor is stopped and the machine is resting on the ground.
13. Before driving on the road, the user must ensure that the instrument is coupled correctly and can be visible in respect of the Highway Code.
14. Verify the correct type-pressure on your tractor.
15. On rough ground or at tight turns reduce your speed.
16. Clear the highway of any mud left by the tractor or tools.
17. Wear safety shoes and gloves when manipulating sharp parts.
18. Always employ **split pins and locking systems**.
19. Before any displacement, even short distances, verify the balance of the tractor and complementary equipment. Never drive over 25 Km/h when loaded.
20. Get in to the machine only by the gangway designed for this purpose.
21. Be sure there is nobody on the seed drill during transportation.

22. Be aware there are no people on the seed drill and in the nearest area during the seed loading. The gangway must be only used at stops.
23. Be sure that all the sections that might be blocked up with seed are cleaned.
24. Verify that the hydraulic hoses for quick connection to the seed drill and to the tractor are clean before connecting.
25. Don't stand under the sun wheel when it is in the transport position.
26. During transportation be especially aware. As the rear visibility is restricted when moving you must ensure that there is no obstacle before backing away. When driving on the roads the driver/owner is the only responsible in case of accident.
27. As there is a risk of rejects you have to keep the safety area of 50 m when working.
28. During the tests of the seed drill at stops the safety area has to have the perimeter of 15 m (putting in operation of hydraulics systems, turbine, disc markers...) and the rear window of the tractor must be closed.
29. Let the machine get cold before any intervention to the hydraulic system.
30. When you put in operation the turbine, respect the security perimeter because of the rejects risk
31. When testing the distribution capacity, the user has to turn the sun wheel carefully to avoid the risk of injury. When rotating the wheel distance everybody at 15 m from the machine.

D – GENERAL SAFETY RULES

- **Never let children** climb on the tractor or play close to equipment, even when the machine is stopped ;
- On delivery of a machine (new or second-hand) insist on the provision of the **user's manual** and the **certificate of conformity** and thereon respect the constructor's instructions ;
- Make sure that the DISC-O-SEM and its complementary equipment does not hide the tractors rear lights ;
- If it necessary put on your machine a **reflective signalization** panels or complementary luminous indicators ;
- Clear the highway of any mud left by the tractor or tools ;
- Be aware that soil-working equipment, however narrow, presents a real danger (cutting-edge blades, ploughshares, discs...) and can be fatal in an accident ;
- Wear safety shoes and gloves when manipulating sharp parts ;
- If the machine is not provided with signalling lamps, anticipate means of signalization: **illumination ramps, catadioptrics, plates or bands of reflective stickers**. Long or large equipment must imperatively have a lamp signalling system when the tractor's rear lights are hidden ;
- Always employ **split pins and locking systems** ;
- For exposed metal parts, use an anti-rusting product or grease.

E– USING OF THE DISC-O-SEM

1. DESCRIPTION

The DISC-O-SEM framework can be equipped with several parts. Each part is supplied with replaceable wear and tear discs. The discs' working depth is controlled by the depth-control device of a roller and the tractor coupling kit.

2. PREPARATION FOR USE

When you receive your DISC-O-SEM, verify that its characteristics are suitable. Then, carry out the preliminary operations for starting up, as indicated in this manual.

3. COUPLING-UP TO THE TRACTOR

1. Reverse (or advance) the tractor to couple it to the DISC-O-SEM which should be resting on a stable surface.
2. Place the lower lifting arms in line with the coupling braces.
3. Couple-up the lower lifting arms by means of the appropriate device.
4. Adjust the length to the third point then fix it with the shaft and clip supplied.
5. To unfasten the DISC-O-SEM, do the preceding operations in reverse order and ensure that the machine is on a stable surface.
6. During coupling-up or unfastening, nobody should remain between the tractor wheels and the DISC-O-SEM.
7. The hydraulic connectors have to be installed according to the manufacturer's instructions.

4. ADJUSTMENTS

4.1 - Working width of a part

- The DISC-O-MULCH is delivered with a pre-adjusted distance between each disc.

4.2 - Depth adjustment

- Put the parts in their working position.
- Adjust the depth by manipulating the shafts and braces of the multistop system when your machine is equipped with a roller.

5. MAINTENANCE AND REPAIR

Before beginning any maintenance operation or oiling, make sure that the safety instructions have been followed. Before adjustments or verification, make sure the DISC-O-SEM is horizontal and stable. Block the machine if necessary.





5.1 OILING

The roller cages (cages, Agrix®, Flexi-Sem®) are fixed by means of two self-aligning bearings which provide grease. For the auto-alignment functions correctly the bearings should be greased when starting new season and regularly throughout the season.

The grease used is lithium based grease reinforced with molybdenum bisulphide / NLGI2 grade. AGRISEM INTERNATIONAL can not be held responsible when any other type of grease is used.

5.2 DISCS

⇒ The discs must be replaced by the discs AGRISEM (as well as bolts and nuts) as soon as their diameter reaches the following values.

Disc diameter	maximum diameter of wear and tear
 Ø460	Ø400
 Ø510	Ø440
 Ø560	Ø 480
 Ø610	Ø520



Never work in sowing position when the rear rang of DOM is equipped by discs Ø610.

AGRISEM INTERNATIONAL can not be held responsible if the DISC-O-SEM is used with discs that have a level of wear and tear superior to that specified.

⇒ To replace the discs :

- Lift the DISC-O-MULCH about 15 cm off the ground and block it in that position with the tractor motor stopped and the parking brake on.
- Take off the damaged disc.
- Put on a new one.

⇒ The recommended pressure of the screws used for the discs installing is 250N/m

The bolts unscrewing

It is important to unscrew all the bolts and screws of the DISC-O-SEM every time before using.



Use only original AGRISEM INTERNATIONAL parts.

5.3 WEARING SPARE PARTS

All the wearing parts are made from specially treated steel, thus it is not advisable to weld them or else the thermal treatment loses its efficiency.

6. ADVISE FOR OPTIMAL USE

Before all usage, make sure that all safety instructions are followed and that the machine has been greased and maintained correctly.

When the soil humidity is great, slipping could degrade the superficial soil structure. It is better to use a tractor with four-wheel drive to reduce sliding.



For road transport remember to retract the lateral clod-breaking board and dismantle the end disc.

Adapt your working speed to the type of soil and chosen working depth.



When working keep on the right and never turn when the machine is on the groundl.

Respect the following working depths:

- Sowing from 1 to 5 cm.

Before beginning work verify the following list:

- Are the wearing parts in good condition and fixed correctly?
- Is there enough ballast on the front of the tractor to lift the DISC-O-SEM ?
- During the work verify that the DISC-O-SEM is correctly coupled and perfectly horizontal when working, in the longitudinal and transversal sense.
- If required, consult your tractor's manual to study all safety aspects and adjustments of tractor raising in order to optimize the use of your equipment.
- Respect the working speed
 - between 8 and 18 km/h on the arable soil without stones
 - between 8 and 12km/h on the arable soil with stones



The Disc-O-Mulch can only work in easy soil without any form of obstacle (ropes, cords)

- ⇒ When using the Disc-O-Sem verify that all the sowing units are functioning equally.
- ⇒ Check the seed outlet of the sowing units before beginning to work

The operation: make turn the wheel 3 times and check the uniform seeds distribution between the sowing units. Make sure that the tubes are not cluttered and the seed is spilled out equally. The seed has to be distributed evenly between all sowing units. This operation has to be repeated every hectare.



The tractor motor has to be off

⇒ Sowing depth control

You can adjust the sowing depth with the rear roller. Make a sowing test through 50m with the wanted working speed and check the sowing depth.

If this depth does not conform to your need, adjust the rear roller again until you have a necessary depth. Check it where the working speed was reached. When the working speed is under 8 km/h, the depth is not regular.

The control of the sowing units and of the depth is imperative after any new setting up of the machine.



When the hopper is placed on the disc

⇒ Check the seed

You have to stop the machine every hectare and check if the seed are distributed evenly on the soil of the band.

⇒ Crossing adjustment with/without tractor

To avoid the lack of superposition of the soil you have to take into consideration the last band and not the soil projection from the second rang of discs to avoid the omission or superposition. For doing this you have to get out the tractor and verify the position of the last band of sowing.

When adjusting the discs markers you have also to verify the seed emplacement of the last band of sowing.

⇒ Emplacement in parallel with the soil

On the field you can adjust longitudinal incidence with the 3d point beam or with the rear roller.

Lamp signalling kit has to be removed when working in the field.

Lamp signalling kit has been developed only for transportation; AGRISEM INTERNATIONAL is not responsible for the lamp signalling kit breakage which can happen during the work.

⇒ Advise for DISC-O-SEM use for stubble breaking

You must remover the hopper with its complementary equipment before using the Disc-O-Mulch for stubble breaking. If you keep the hopper on during stubble breaking it might be deteriorated.

The correct use of the DISC-O-MULCH optimizes and ensures a good establishment of your crop. The user must make his own decisions and assume the risks taken should his machine be used incorrectly or inappropriately.

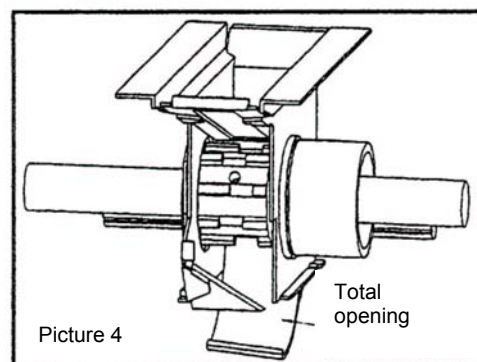
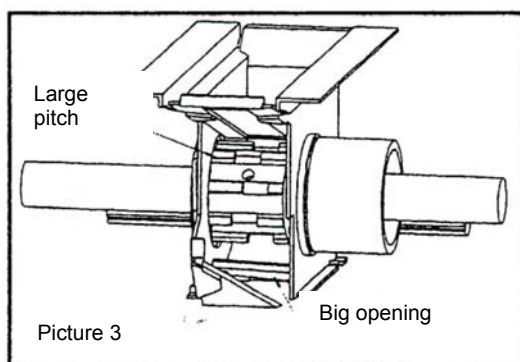
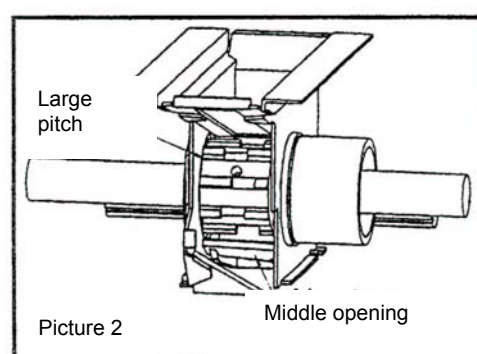
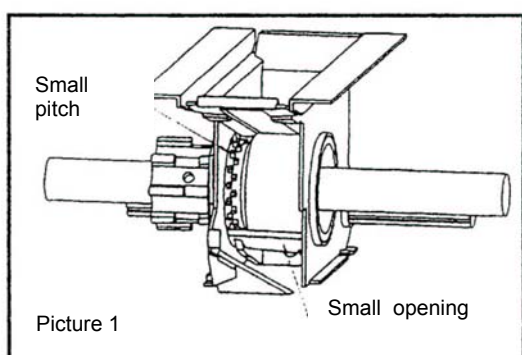
AGRISEM INTERNATIONAL can not be held responsible for soil degradation or a result which is not up to your expectations.

F— PREPARATION TO USE

1. DOSING MECHANISM

Batchers of type « one-two » have two different modes of operation:

- Small pitch, little slot for the small seed. (pic. 1)
- Large pitch, teeth are in staggered rows for the normal and big seed (pic. 2 et 3)



The removable bottom is used to:

- Modify the lower opening of the hatch according to the seed measure. (pictures 1, 2 and 3)
- Empty the hopper of the seed into the shoot by total opening of the hatches (picture 4).

⚠ For changing the roller position from the LARGE pitch to the SMALL pitch you should keep your batchers clean.

When the pitch of the batchers and the opening of the removable bottom are regulated, the sowing output will depend on the speed of the dosage rollers.

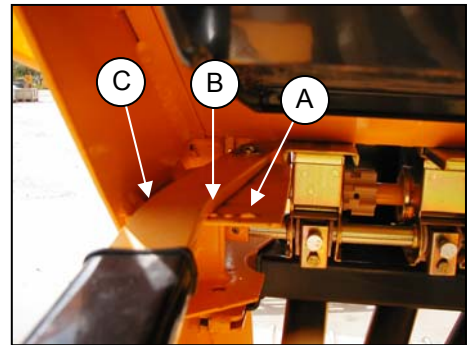
Speed variator allows to adjust sowing exactly in the range from 0 to 600 kg/ha.

2. DOSAGE

Ensure that the batchers are open and that the hatches don't block the seed movement.
Before filling up the hopper, connect the coupling of agitator to the axle of variator, beeing sure that no object is into the hopper.

Put the adjusting lever of the batchers:

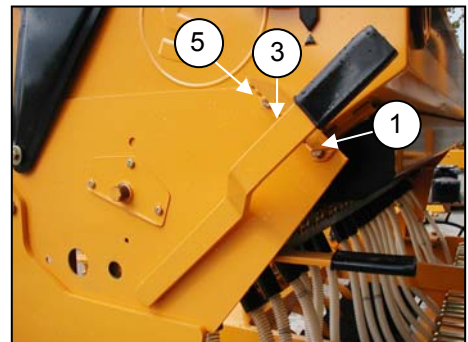
on the right (A) LARGE pitch for wheat, orge, barley and so on
in the center (B) MIDDLE pitch for sunflower, green peas...
on the left (C) SMALL pitch for lucerne, rape and so on



Put the lever of the mobil bottom:

In position (1) for small seeds
In position (3) for wheat and barley
In position (5) for very big seeds

When emptiing the hopper put a shoot under the batchers
and move the lever forward of (5)



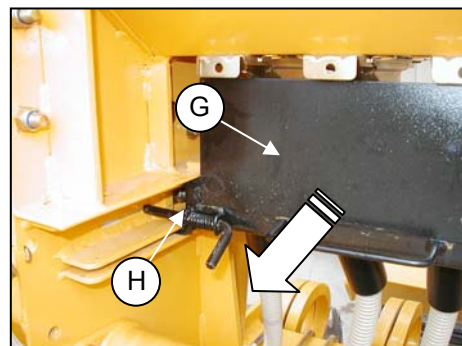
Put the arm on the number from 0 to 100 according to the
kind of seed, see the table on the page 13.



3. SOWING CONTROL

When you have adjusted the dosage pitches, removable bottom opening and variator lever test, the sowing dosage:

Make slide forward the tube support line **G** by releasing a latches **H** which keep it in the working position



Turn the Sun wheel several times until the seeds drop in the shoot.

Take off the seeds and then turn again the Sun wheel several times accordingly to the seed drill width.

Collect the seeds and weigh them.

Multiply the result by 50 to obtain the output for a hectare.



Seed drill width	Numbre of tours of sun wheel to make	Multiply the result by 50 to have the output for a hectare
3m	28	
4m	21	

Tours must be regular: about one tour/a second.

The number of tours is approximate, and can vary according to the type of soil.

During the operation you must couple your machine to the tractor in a slightly mounted position. It is also suggested to half-fill the hopper with the seed in order to facilitate the wheel rotation.

If there is a lot of dust in the seed the output can be reduced. In this case the double control is imposed.

4. DOSAGE TEST

In case of difference between the test result and the prescribed dose when the soil is wet or uneven you can carry out the following experiment:

Pass through 100 m with the seed drill in the working position, count up the number of tours made during the path.

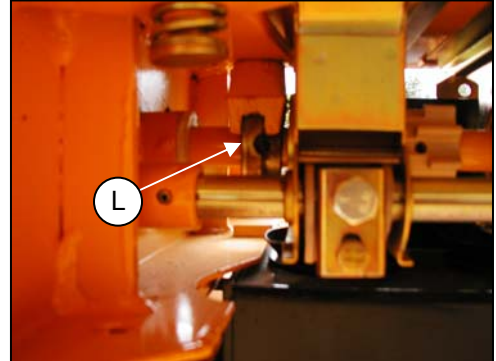
The number of tours corresponds to the seed dosage test.

5. MAINTENANCE

5.1. OILING

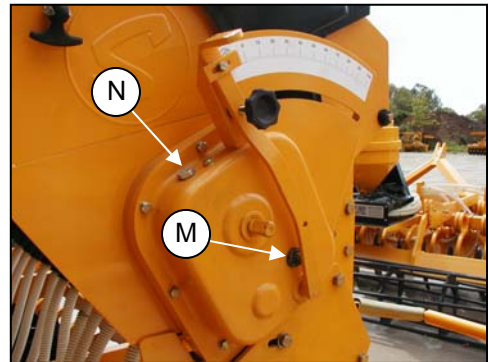
The following parts must be oiled regularly:

- « Small-Large position» regulator (L)



- Check the level of oil (M)

- Fill up if necessary (N)



Don't oil the batchers

5.2. ANTICORROSIVE CONTROL

After each season make the total control of the whole machine

- Dismantle hoses, sowing line support, braces of distributors and clean them thoroughly
- Clean the whole machine with water, especially inside of the hopper and of the distributors. Turn the Sun wheel to make rotate the distribution system (see page 15) letting water run.
- Paint the corrosive parts especially on the sheet iron.
- Check the overall oiling

5.3. OIL

The oil used in the variator is: **SAE30**

6. DOSAGE TABLE FOR DS1100



The quantities indicated in the table can be different in dusty and humid conditions and if the density is not the same...



For precise sowing you have to see the table in the paragraph 4 DOSAGE TESTING



To know: Bigger seeds are, more opening must be
There must be larger opening for the elongated seeds than for the round ones
Lighter seeds are more opening must be

SEED DOSAGE TABLE (Kg / ha)

Sector N	WHEAT	BARLEY	TRITICALE	PEAS	HARICOT	RAPE	VETCH	RAY-GRAS	LUZERNE	SPINACH
<i>Nombre of pitches</i>	<i>large</i>	<i>large</i>	<i>large</i>	<i>large</i>	<i>large</i>	<i>small</i>	<i>large</i>	<i>smal</i>	<i>large</i>	<i>small</i>
14					67,4	3,5	63,7		11,4	5
16					80,7	4,7	77		13,9	5,9
18					95,9	5,3	93,1		16,8	7,4
20	74,1	58	56,1	40	114	6,2	107,4		19	8,7
22	83,6	64,6	61,7	45	127,3	7,5	123,5		21,8	10,5
24	93,1	71,3	68,4	48	140,6	8,5	135,9		23,4	11,7
26	100,7	79,8	74,1	54	160,6	10,9	149,2	9,8	25,6	13,1
28	110,2	86,5	81,7	59	175,8	12,4	168,2	10,9	29,2	14,5
30	116,8	94,1	88,3	65	191	13,5	185,2	12,1	31,4	16
32	131,1	100,7	96,9	68	207,1	14,9	194,7	13,5	34,2	17,5
34	132	108,4	106,4	72	221,3	16,5	214,7	16,1	37,1	18,8
36	140,6	116,8	115,9	77	240,4	18		17,4	39,9	19,9
38	148,2	123,5	123,5	81		19,9		18,3	43,7	21,9
40	156,8	131,1	131,1	85		21,7		19,5	49,4	25,6
45	175,8	148,2	144,4	89		24,4		21,1	53,2	29
50	193,8	163,4	157,6	97				23,1	59,8	32,4
55	212,9	187,1	173,8	101				26	62,7	38,9
60	231,8	196,7	189,1	109				30,8	67,4	
65	250,8	212,9	204,3	134				35		
70	270,7	228	219,5	145				44		
75	289,7	245,1	234,6	155						
80	309,7	259,4	249,8							
85	325,8	275,6	264,1							
90	343,9	289,7	280,3							
95	361,9	305,9	295,5							
100	381,9	321,1	311,6							
Mobile bottom lever	3	3	3	5	4	1	3	2	1	1
Weight of 1000 pieces of seed/g	40	46	30	293	530		44			12

7. DOSAGE TABLE FOR DS1400



The quantities indicated in the table can be different in dusty and humid conditions and if the density is not the same...



For precise sowing you have to see the table in the paragraph 4 DOSAGE TESTING

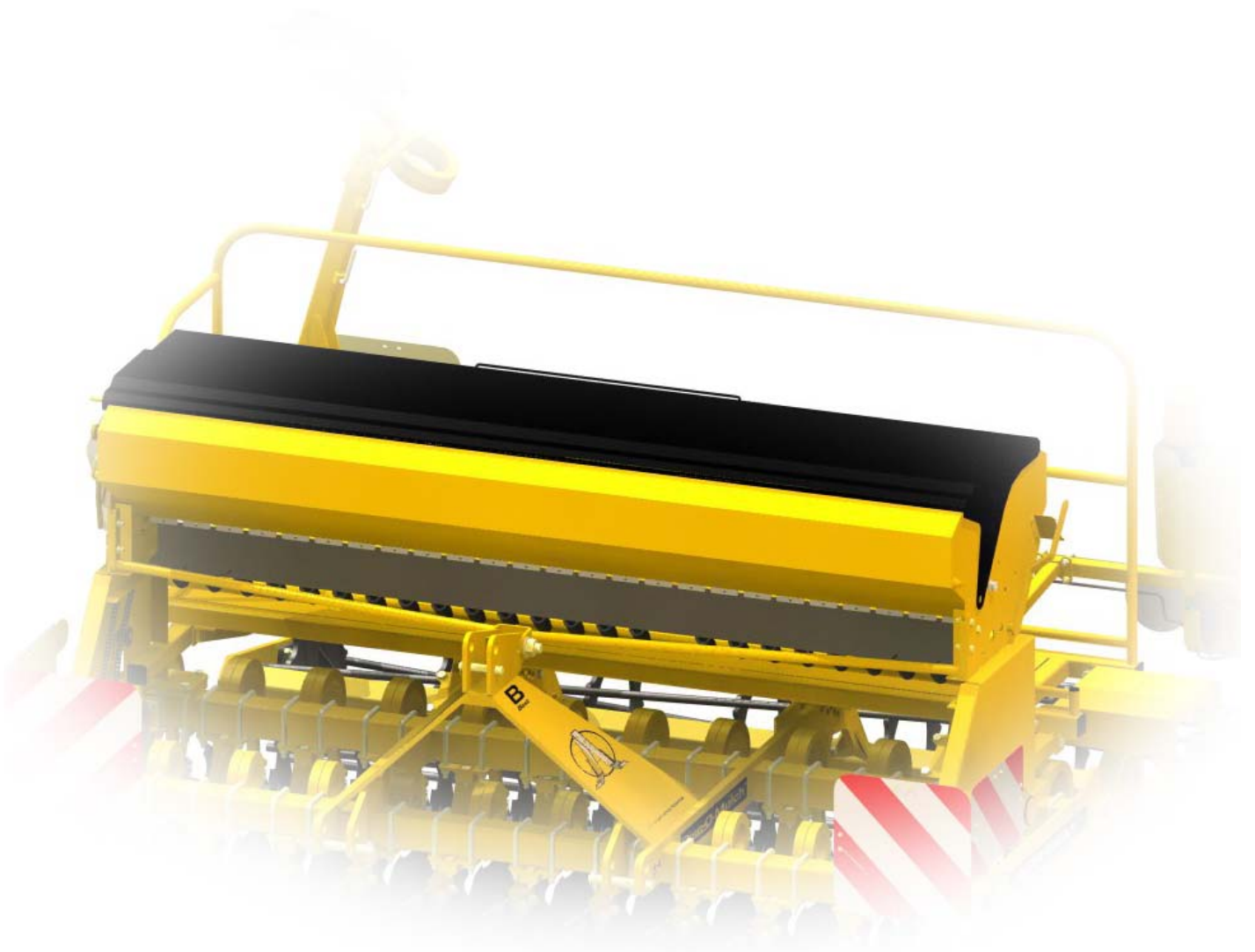


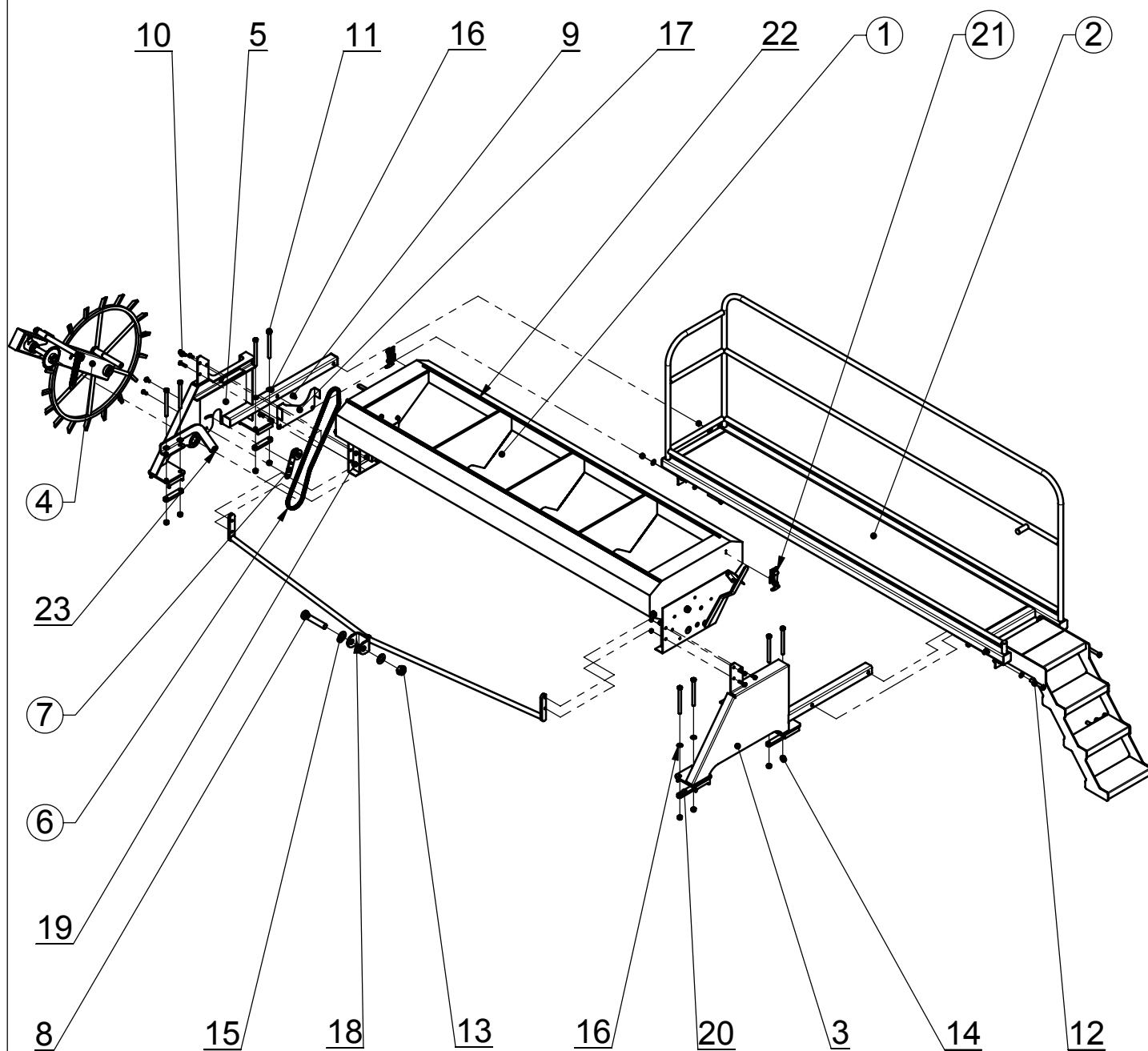
To know: Bigger seeds are, more opening must be
There must be larger opening for the elongated seeds than for the round ones
Lighter seeds are more opening must be

SEED DOSAGE TABLE (Kg / ha)

Sector N	WHEAT	BARLEY	TRITICALE	PEAS	HARICOT	RAPE	VETCH	RAY-GRAS	LUZERNE	SPINACH
<i>Nombre of pitches</i>	<i>large</i>	<i>large</i>	<i>large</i>	<i>large</i>	<i>large</i>	<i>small</i>	<i>large</i>	<i>smal</i>	<i>large</i>	<i>small</i>
14					89,7	4,7	84,9		15,2	6,7
16					107,6	6,3	107,7		18,5	4,4
18					127,9	7,1	124,1		22,4	9,9
20	98,8	77,3	74,8	53,3	152	8,3	143,2		25,3	11,6
22	111,5	86,1	82,3	60	169,7	10	164,7		29,1	14
24	124,1	95,1	91,2	64	187,5	11,3	181,2		31,2	15,6
26	134,3	106,4	98,8	72	214,1	14,5	198,9	13,1	34,1	17,5
28	146,9	115,3	108,9	78,7	234,4	16,5	224,3	14,5	38,9	19,3
30	155,7	125,5	117,7	86,7	254,7	18	246,9	16,1	41,9	21,3
32	174,8	134,3	129,2	90,7	276,1	19,9	259,6	18	45,6	23,3
34	176	144,5	141,9	96	295,1	22	286,3	21,5	49,5	25,1
36	187,5	155,7	154,5	102,7	320,5	24		23,2	53,2	26,5
38	197,6	164,7	164,7	108		26,5		24,4	58,3	29,2
40	209,1	174,8	174,8	113,3		28,9		26	65,9	34,1
45	234,4	197,6	192,5	118,7		32,5		28,1	70,9	38,7
50	258,4	217,9	210,1	129,3				30,8	79,7	43,2
55	283,9	249,5	231,7	134,7				34,7	83,6	51,9
60	309,1	262,3	252,1	145,3				41,1	89,9	
65	334,4	283,9	272,4	178,7				46,7		
70	360,9	716,3	292,7	193,3				58,7		
75	386,3	326,8	312,8	206,7						
80	412,9	345,9	333,1							
85	434,4	367,5	352,1							
90	485,5	386,3	373,7							
95	482,5	407,9	394							
100	509,2	428,1	415,5							
Mobile bottom lever	3	3	3	5	4	1	3	2	1	1
Weight of 1000 pieces of seed/g	40	46	30	293	530		44			12

D – SPARE PARTS DS610



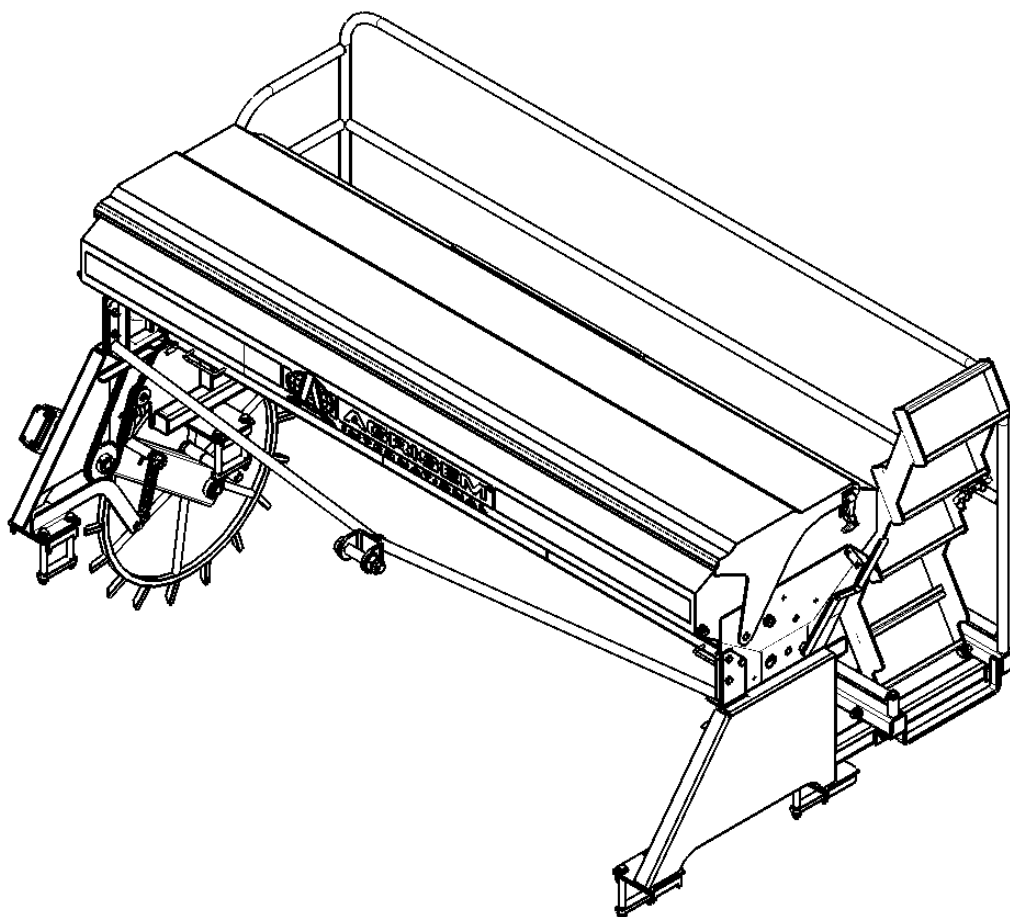


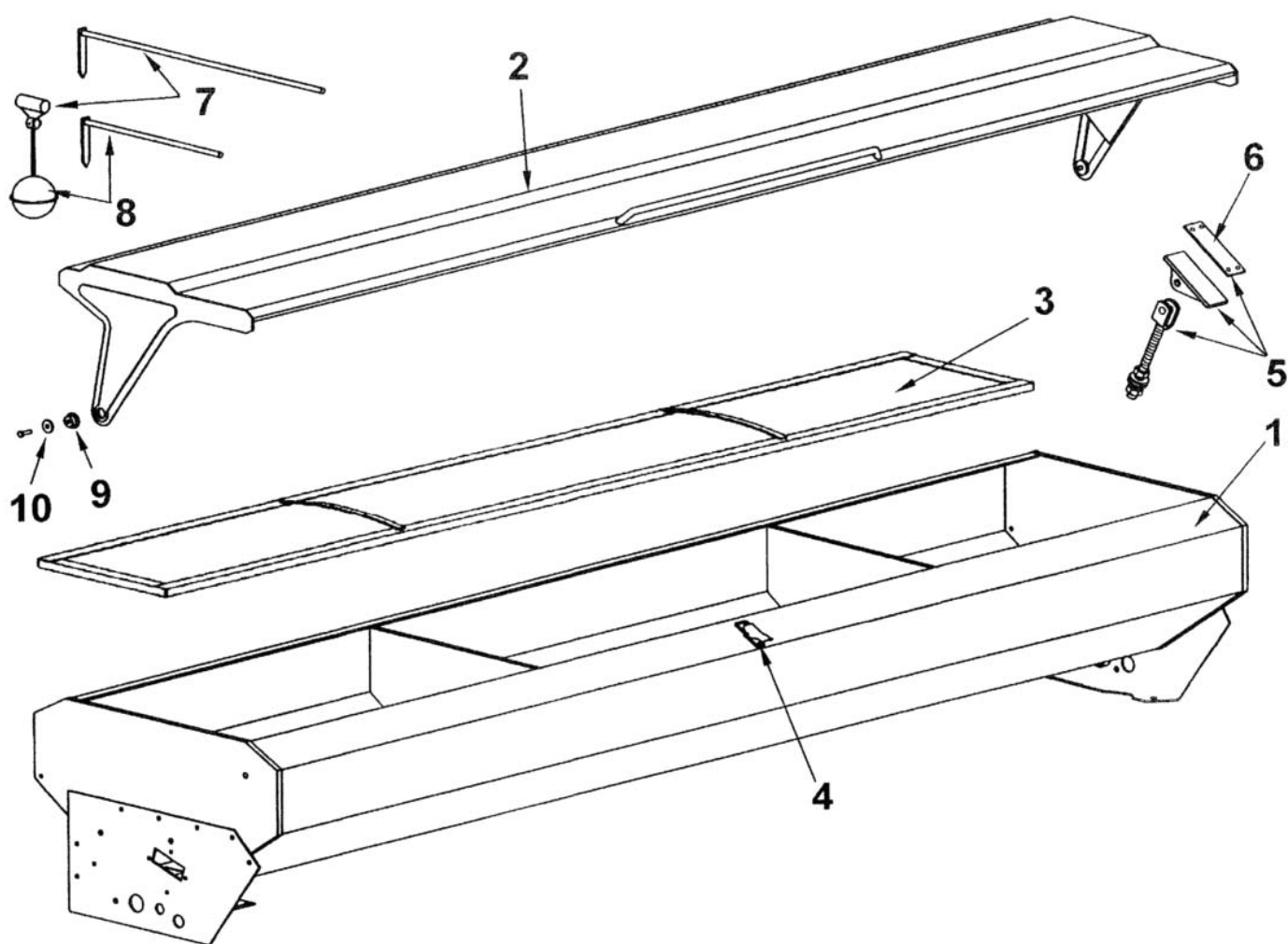
Seed drill DS610 - 3.00m - for DOM BEST

Reference : DS610-301

Weight : 515.63 Kg

Table de nomenclature					
Seep	Reference	Description	Qty.	Weight	Comments
1	AGR3000-001	Hopper kit - DS610 seed-drill 600L 3m 25 outlets	1	249.84	
2	SEM10-28-004	Gangway kit	1	126.41	
3	DS610-13-503b	Right support	1	32.59	
4	SEM10-13-001	Sun wheel arms kit	1	44.29	
5	DS610-13-504d	Left support	1	40.37	
6	DS610-13-002	Variator transmission chaine	1	1.29	
7	SEM10-13-002	Tension- pulley arm kit	1	0.56	
17	DS610-13-612	Carter	1	0.68	
9	VH12-025-FT	Screw H - M12 x 25 - 8.8 - bichromated yellow	4	0.040	
19	EH12	Nut H - M12 - 8 - bichromated yellow	6	0.017	
11	VH16-180	Screw H - M16 x 180 - 8.8 - bichromated yellow	8	0.323	
16	R16M	Average washer Ø16 - yellow electro zinc	16	0.01	
14	EN16	Nylstop Nut M16 - 8 - bichromated yellow	12	0.039	
12	VH16-100	Screw H - M16 x 100 - 8.8 - bichromated yellow	4	0.181	
20	CB16-100	Metal-Plate CB16-100	4	0.46	
21	DS610-13-003	Carter fixing kit	2	0.51	
22	AGR3000-605	Profile MF14	1	1.45	
23	DS610-13-616	Spring leg	1	2.38	
18	DS610-13-505	Buckle guy	1	6.82	
10	VH12-045	Screw H - M12 x 45 - 8.8 - bichromated yellow	4	0.058	
8	VH30-160	Screw H - M30 x 160 - 8.8 - bichromated yellow	1	1.374	
15	R30M	Average washer Ø30 - yellow electro zinc	2	0.07	
13	EN30	Nylstop Nut M30 - 8 - bichromated yellow	1	0.27	

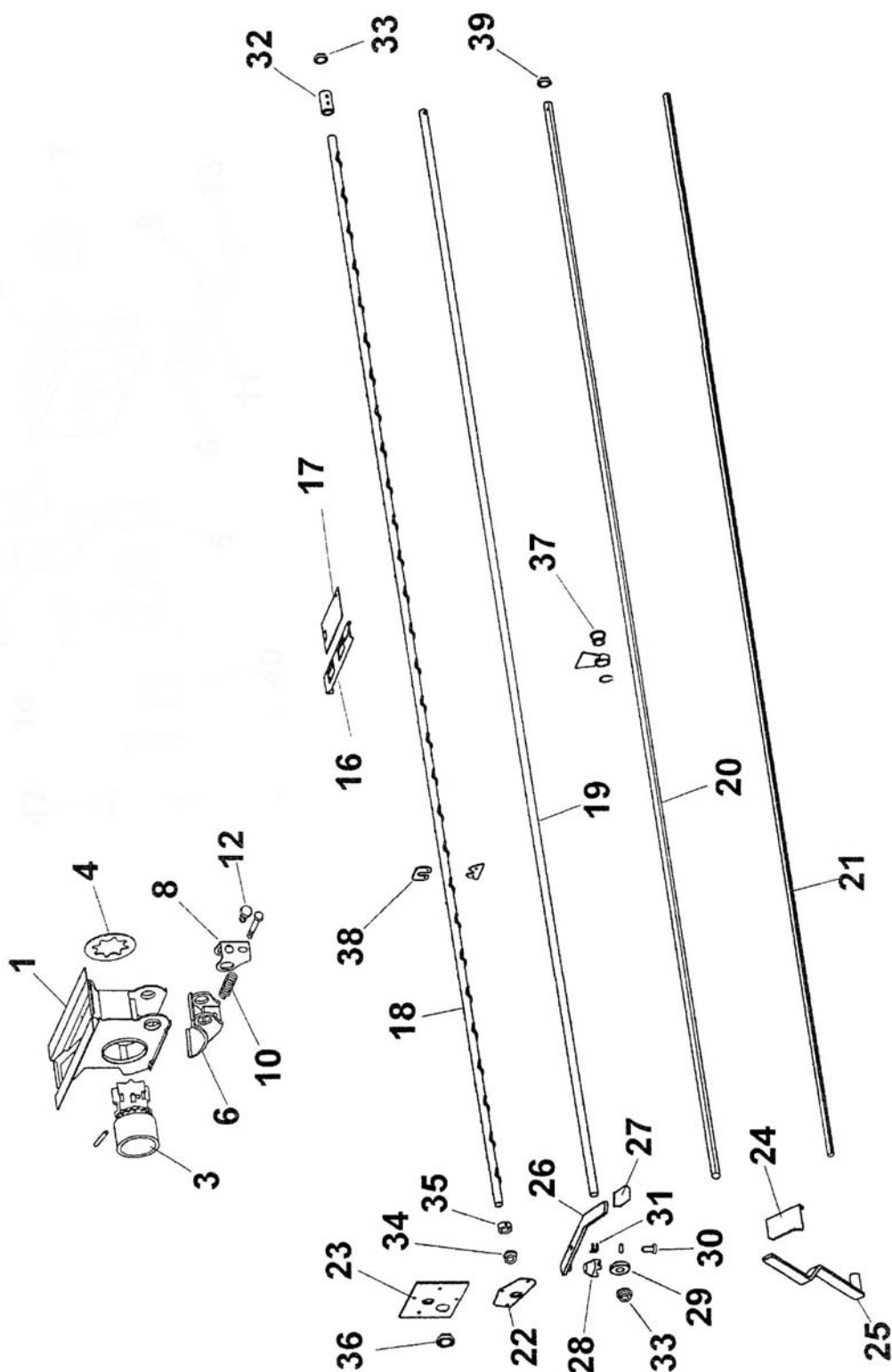




Hopper kit DS610

Reference : AGR3000-001

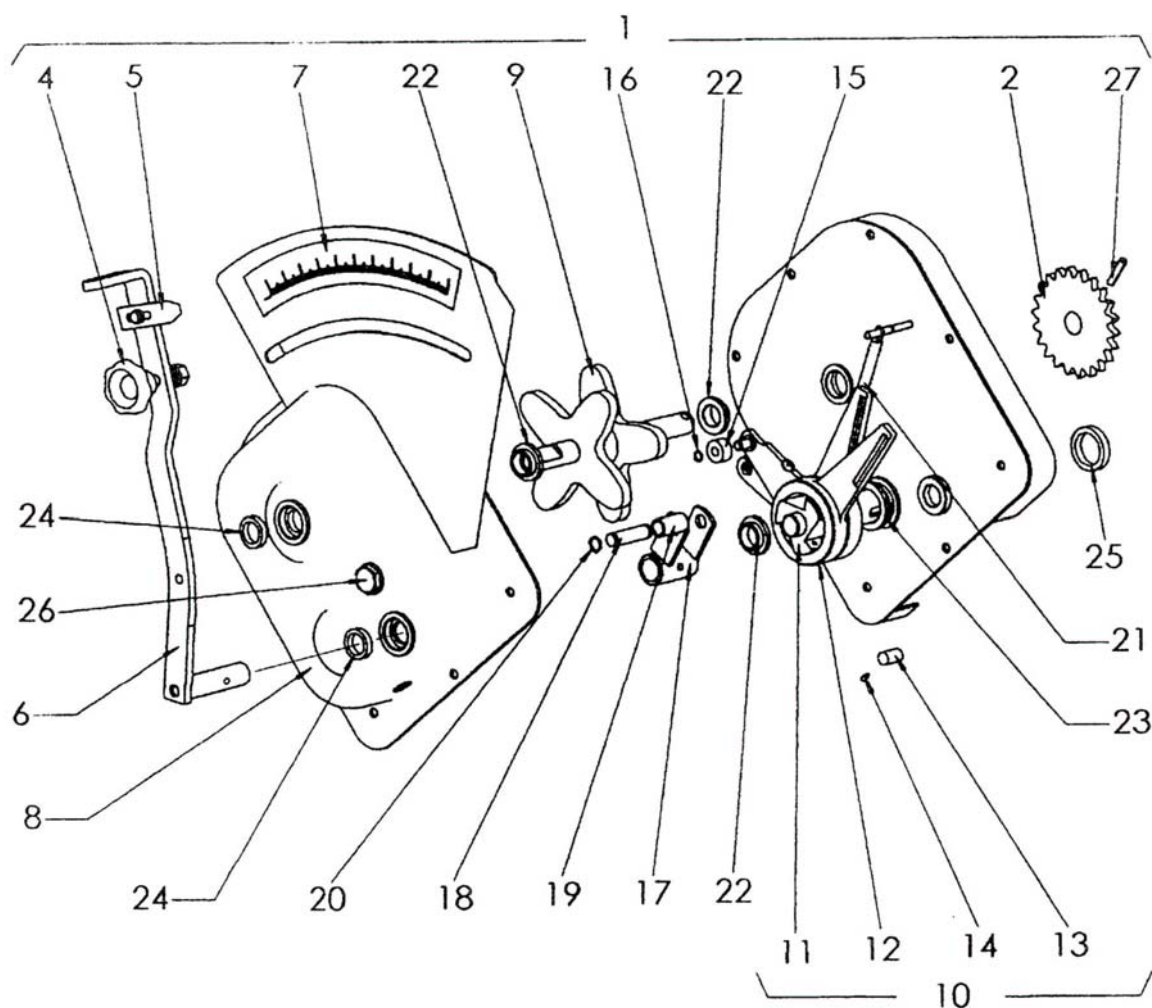
					Weight : 214 kg
Seep	Reference	Description	Qty.	Weight	Comments
1	PS-2671	Hopper 600L - 25 outlets	1	165,0	
2	PS-1302	Hopper lid - 25 outlets	1	44	
3	PS-1402	Grid	1	5,0	
4	MB-60	Lock hook	1		
5	RE-020201	Coupling axle	2		
6	PL-020201	Coupling plate	2		
7	RE-020200	Seed drill bob axle	1		
8	RE-020202	Hopper bob	1		
9	BU-020700	Blocking bolt of hopper cover	2		
10	EE-030200	Washer	2		



Distribution kit DS610

Reference : AGR3000-011

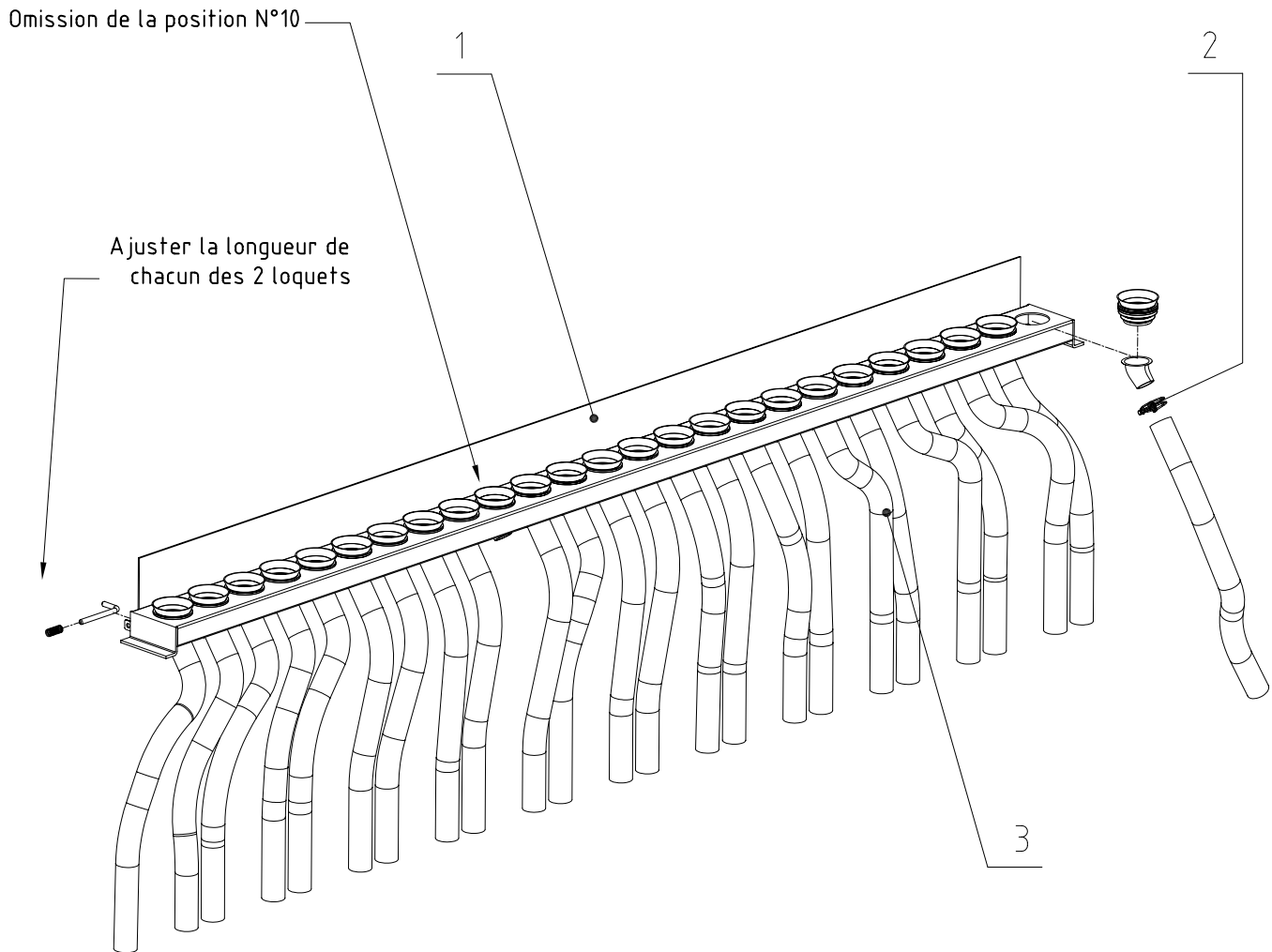
					Weight :
Seep	Reference	Description	Qty.	Weight	Comments
1	MD-11	Seed drill distributor			
3	PL-040201	Seeds distribution roller			
4	EE-040201	Grooved washer bichromate			
6	PL-040205	Cover of removable tray			
8	EE-040332	Removable tray support clip			
10	ML-020200	Removable tray hatch sping bichromate			
12	933 8X20B PUNTA	Screw DIN 933 M-8x20 with bichromate point			
16	EE-040226	Lock hatch bichromate			
16	EE-040228	Sliding hatch inoxydable			
17	EE-040229	Distribitor replacement hatch			
18	EE-040230	Agitator axle			
19	TA-0402/16/17/18	Distribution axle			
20	PM-0408/09/10/11	Fertilizer distribution axle			
21	PM-0402/12/13/14	Removable axle			
22	EE-020215	Mixer support cover			
23	TA-0509	Cover ring of the hopper agitator axle			
24	EE-040219	Removable tray lever graduator			
25	PS-0410	Removable tray lever			
26	PS-0408	Distribution lever SD			
27	PL-040203	Plastic part for plate 30x8			
28	ME-040223	Small bearing blockage			
29	ME-040214	Small bearing Ø20 mechanized			
30	BU-040208	Distribution lever junction bolt			
31	ML-020202	Regulator of lever spring			
32	ME-040227	Agitator coupling rod tube			
33	PL-020204	Socket Ø20, 2xØ25x10			
34	PL-020205	Socket Ø20, 2xØ25x10 with groove			
35	ME-020202	Agitator socket stop ring			
36	FE-600009	Socket			
37	PL-020203	Ring socket of fertilizer axle			
38	EE-040215	Support bridge of agitator coupling rod			
39	FE-600003	Socket axle and			



Sowing variator kit DS610

Reference : AGR3000-010

					Weight :
Seep	Reference	Description	Qty.	Weight	Comments
1	MO-0601	Sowing variator SV-05			
2	ME-040100	Pinion 22 dents for chain 1/2"			
3	PL-040100	Strainer pinion for chain 1/2"			
4	MV-09	Flounce with screw M-10 left threading			
5	PX-040204	Variator lever needle			
6	PS-0610	Sowing variator regulator lever			
7	AD-040200	Sowing variator graduation sticker			
8	PS-0618	Cover box of sowing variator with graduation			
9	TA-0618	Outer cross-piece of sowing variator			
10	MO-0605	Free sowing axles set			
11	RE-040201	Drive shaft of sowing variator			
12	ME-040226/D	Trailing cam long right			
12	ME-040226/I	Trailing cam long left			
13	RODILLO 12X18	Roller 012X19			
14	RE-040202	Dowel to fix roller with spring			
15	PL-040200	Cam ring			
16	471 8	Ring DIN 471 08			
17	PS-0611	Cams stop iron ring of sowing variator			
18	BU-040200	Cames stop axle			
19	PL-040206	Stop socket cams			
20	471 12	Ring DIN 471 012			
21	ML-040101	Cames return sping			
22	PL-040207	Socket 020x025x10			
23	PL-040208	Socket 030x035x10			
24	FE-601004	Double bord joint 020x028x6			
25	FE-601005	Double bord joint 030x040x7			
26	HI-707005	Oil level viewfinder 1/2" gas			
27	1481 6X30 BI	Flexible split pin DIN 1481 06x30 bichomate			



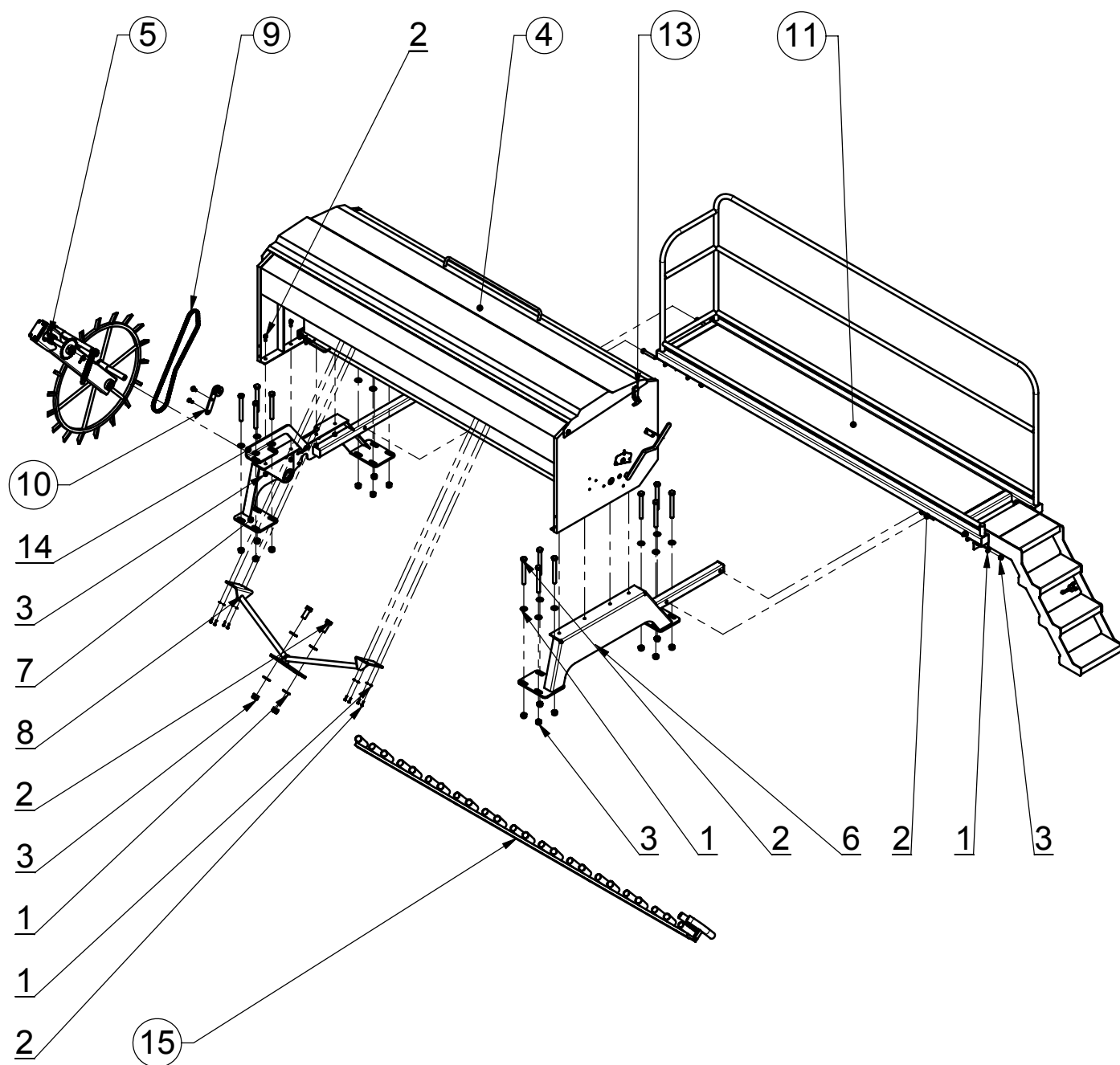
Distribution ramp kit DS610

Reference : AGR3000-009

					Weight : 14,3 kg
Seep	Reference	Description	Qty.	Weight	Comments
1	AGR3000-601	Funnel protection plate	1	7,4	
2	CDF-38-43	Double-threaded clamp for hose	24	0,1	
3	TUS-40	polyurethane hose PVC wrap	24	0,21/m	
4	PL-050301	Support for funnel	25	0,02	
5	PL-050300	Funnel	25	0,04	

E – SPARE PARTS DS1100

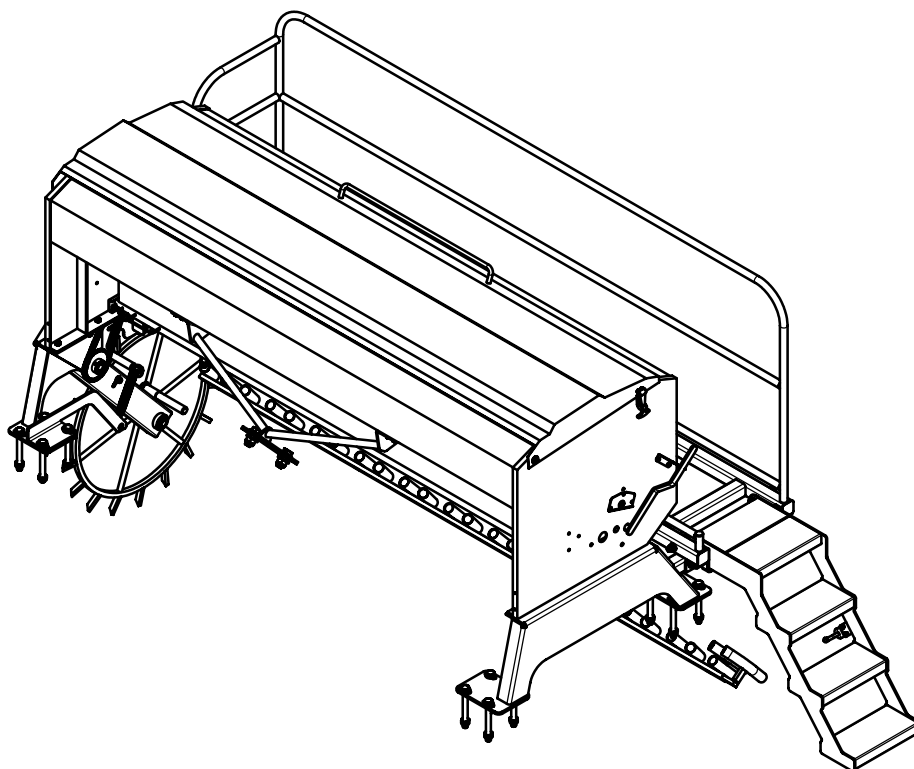


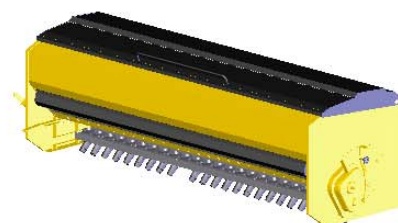
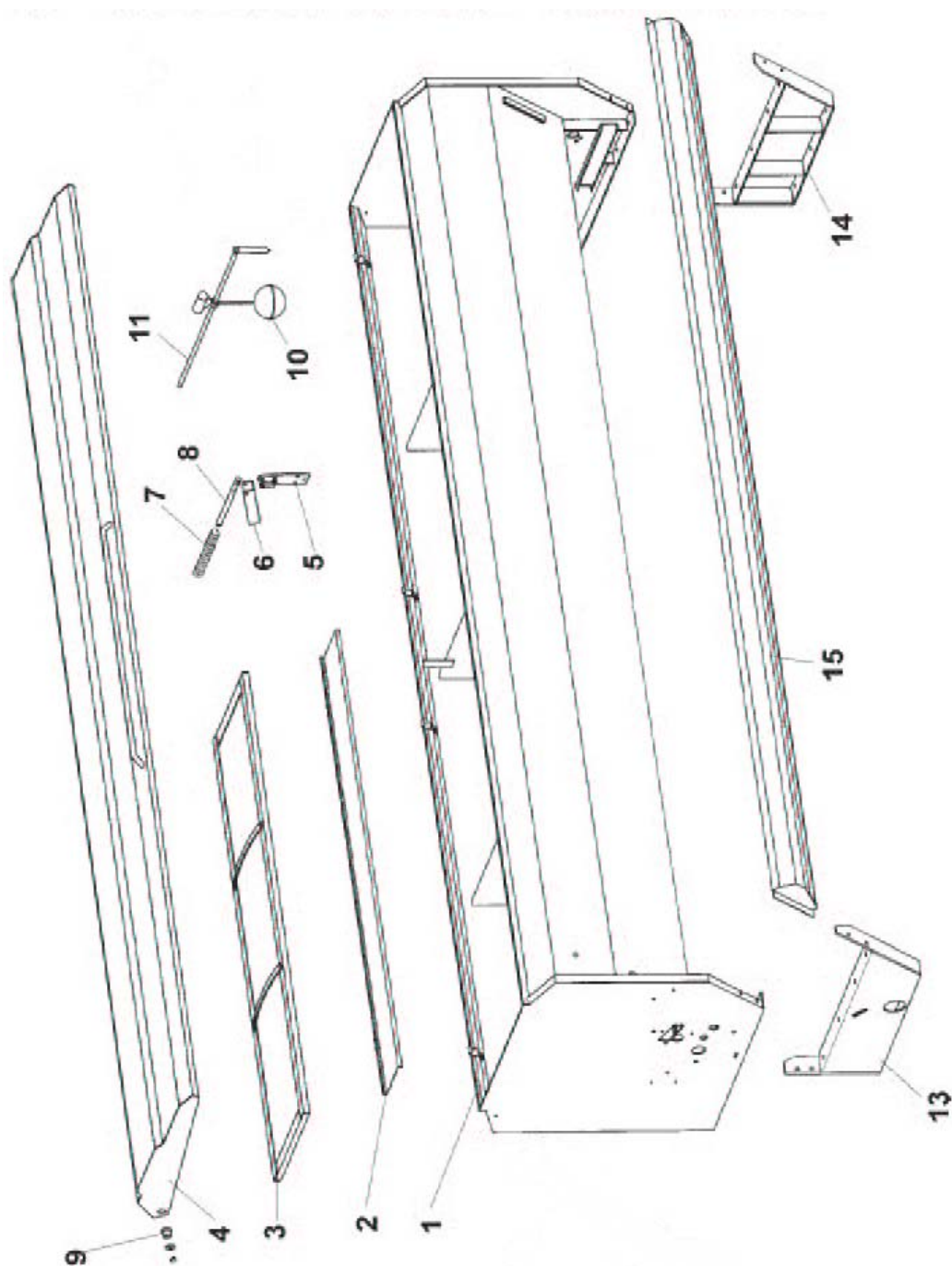


Seed drill DS1100 - 3.00m - for DOM S35

Reference : DS1100-300

					Weight : 565.05 Kg
Seep	Reference	Description	Qty.	Weight	Comments
1	R16M	Average washer Ø16 - yellow electro zinc	36	0.01	
2	VH12-030-FT	Screw H - M12 x 30 - 8.8 - bichromated yellow	40	0.045	
3	EN20	Nylstop Nut M20 - 8 - bichromated yellow	38	0.076	
4	DS1100-001	Hopper DS1100 -1100L 3.00m - 25 outlets	1	289.53	
5	SEM10-13-001	Sun wheel arms kit	1	44.29	
6	SEM10-28-507	Right support	1	29.79	
7	SEM10-28-512	Left support	1	35.26	
8	SEM10-28-506	Buckle guy	1	6.56	
9	SEM10-28-005	Variator drive chain	1	1.15	
10	SEM10-13-002	Tension- pulley arm kit	1	0.56	
11	SEM10-28-004	Gangway kit	1	126.41	
12	SEM10-28-664	Casing cover	1	1.25	
13	DS610-13-003	Clip kit	2	0.51	
14	SEM10-28-671	Support sping	1	3.15	
15	DOM8-13-027	Sowing ramp kit Ø40	1	13.30	

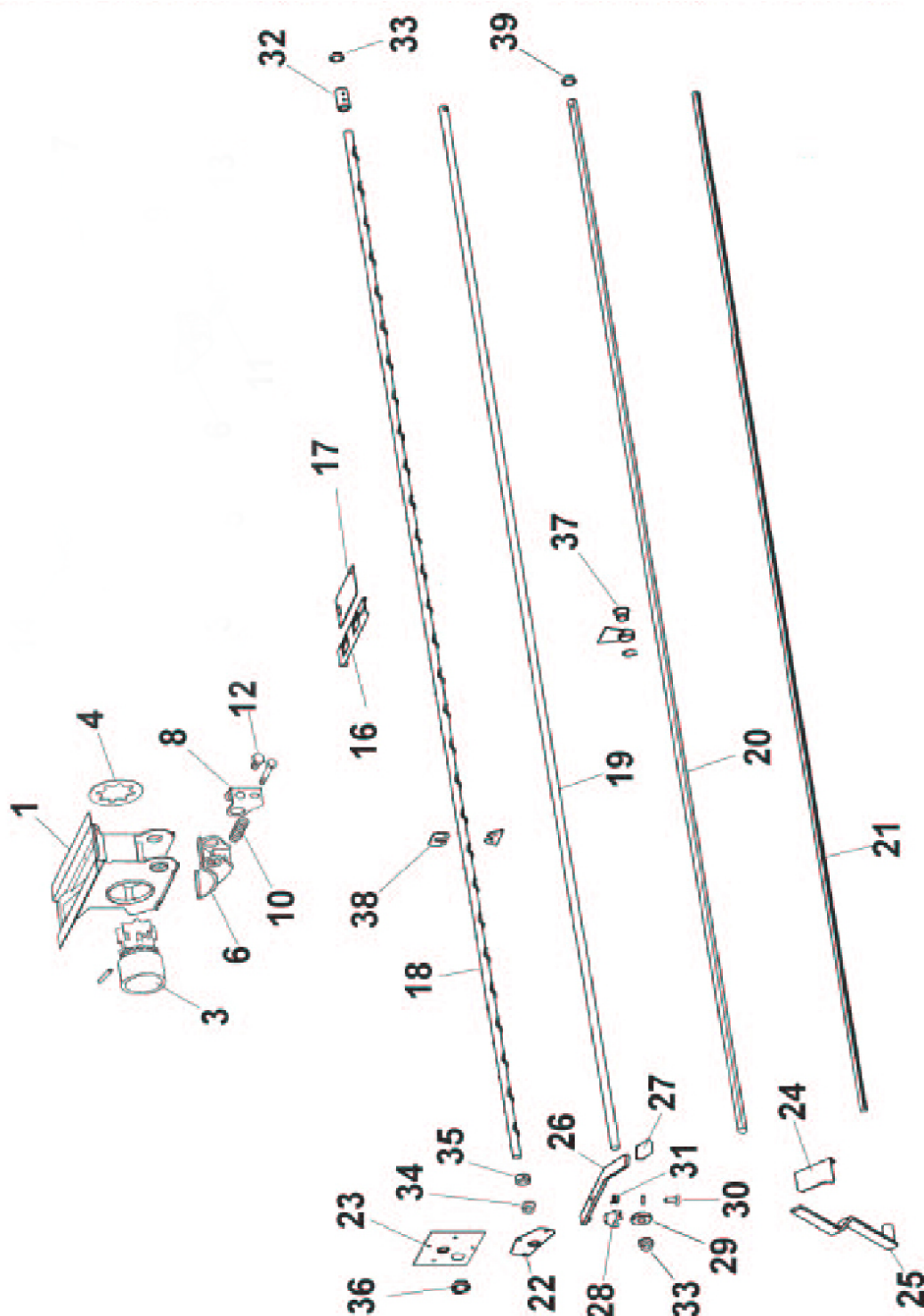




Hopper kit DS1100

Reference : DS1100-001

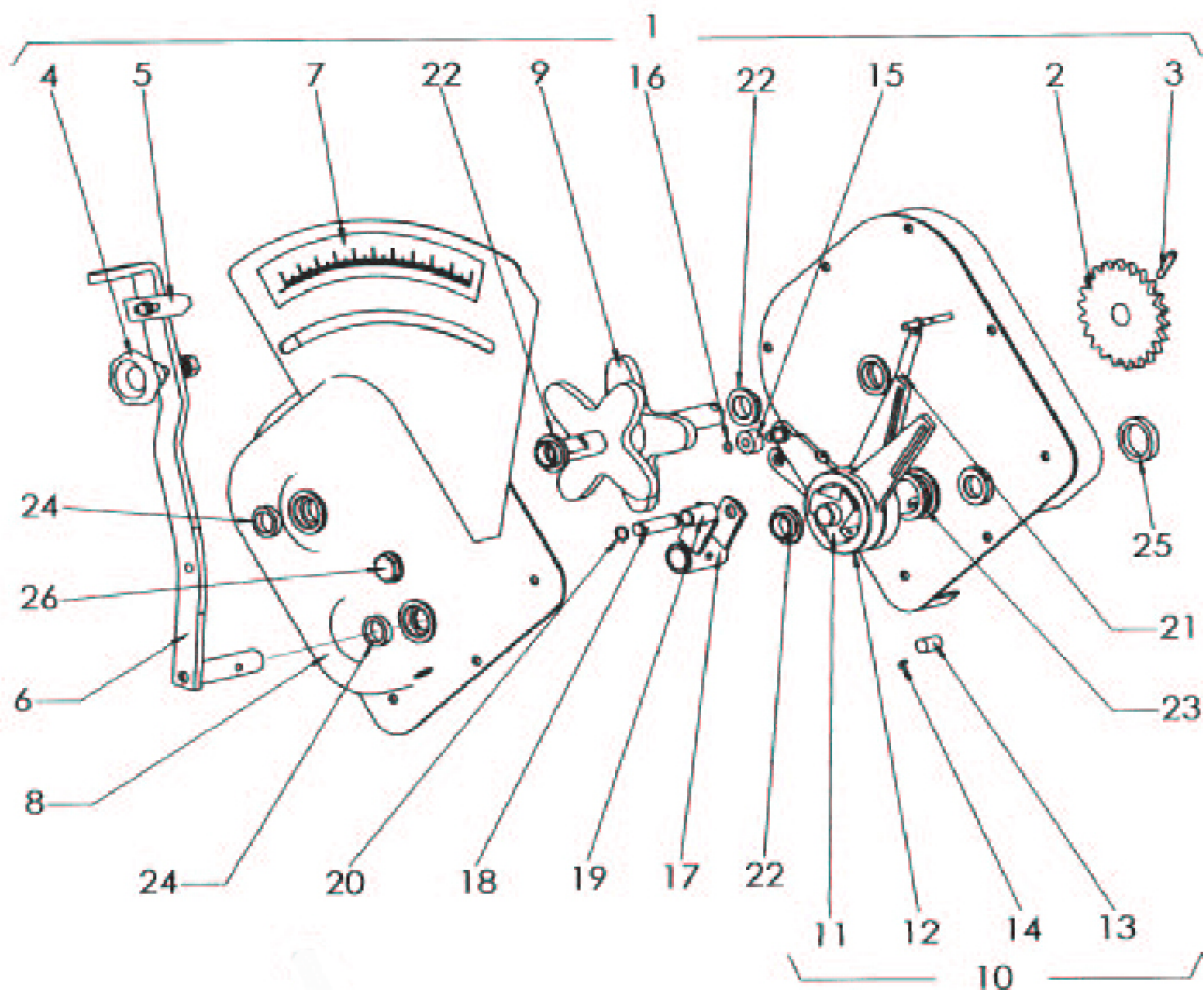
					Weight :
Seep	Reference	Description	Qty.	Weigh	Comments
1	PS-020502	Seed drill hopper SD 301			
2	PS-030506	Hopper cover board SD 300			
3	PS-030510	Grid SD 300			
4	PS-030502	Hopper cover SD 300			
5	PS-030514	Hopper cover spring junction SD			
6	TA-030501	Stop "U" of hopper cover SD			
7	ML-030500	Hopper cover sping SD			
8	BU-030500	Hopper cover sping bolt SD			
9	BU-020700	Blocking bolt of hopper cover			
10	PS-020516	Hopper bub SD			
11	TA-0510	Hopper bob axle			
13	PS-060206/I	Hopper lateral base 597 left			
14	PS-060206/D	Hopper lateral base 597 right			
15	MB-61	Oil drain tray 300			



Distribution kit DS1100

Reference : DS1100-002

					Weight :
Seep	Reference	Description	Qty.	Weigh	Comments
1	MD-11	Seed drill distributor			
3	PL-040201	Seeds distribution roller			
4	EE-040201	Grooved washer bichromate			
6	PL-040205	Cover of removable tray			
8	EE-040232	Removable tray support clip			
10	ML-020200	Removable tray hatch spring bichromate			
12	933 8X20B PUNTA	Screw DIN 933 M-8x20 with bichromate point			
16	EE-040228	Lock hatch bichromate			
16	EE-040229	Sliding hatch inoxydable			
17	EE-040230	Distributor replacement hatch			
18	PS-0416/17/18/19	Agitator axle			
19	PM-0408/09/10/11	Distribution axle			
20	TA-0506/07/08/12	Fertilizer distribution axle			
21	PM-0402/12/13/14	Removable axle			
22	EE-020215	Mixer support cover			
23	TA-0509	Cover ring of the hopper agitator axle			
24	EE-040219	Removable tray lever graduator			
25	PS-0410	Removable tray lever			
26	PS-020525	Distribution lever SD			
27	PL-040203	Plastic part for plate 30x8			
28	ME-040223	Small bearing blockage			
29	ME-040214	Small bearing Ø20 mechanized			
30	BU-040208	Distribution lever junction bolt			
31	ML-020202	Regulator of lever spring			
32	ME-040227	Agitator coupling rod tube			
33	PL-020204	Socket Ø20, 2xØ25x11			
34	PL-020205	Socket Ø20, 2xØ25x12 with groove			
35	ME-020202	Agitator socket stop ring			
36	PL-040208	Socket Ø30xØ35x10			
37	PL-020203	Ring socket of fertilizer axle			
38	EE-040215	Support bridge of agitator coupling rod			
39	FE-600012	Socket axle and Ø18xØ25x10			



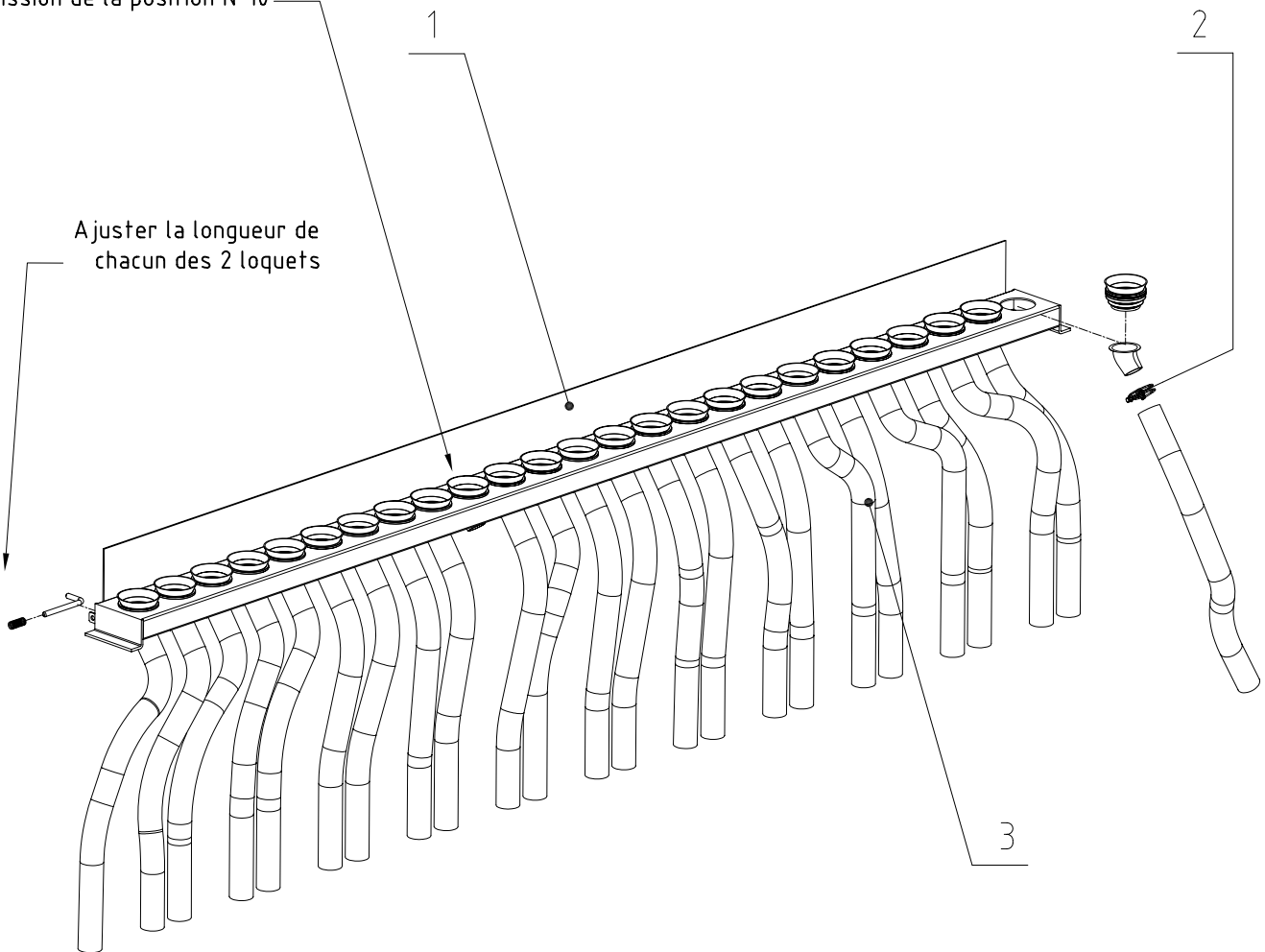
Sowing variator kit DS1100

Reference : DS1100-003

					Weight :
Seep	Reference	Description	Qty.	Weigh	Comments
1	MO-0601	Sowing variator SV-05			
2	ME-040402	Pinion 17Z for chain 1/2"			
3	1481 6X40 BI	Flexible split pin DIN 06X40 bichomate			
4	MV-09	Flounce with screw M-10 left threading			
5	PX-040204	Variator lever needle			
6	PS-0610	Sowing variator regulator lever			
7	AD-040200	Sowing variator graduation sticker			
8	PS-0618	Cover box of sowing variator with graduation			
9	TA-0618	Outer cross-piece of sowing variator			
10	MO-0605	Free sowing axles set			
11	RE-040201	Drive shaft of sowing variator			
12	ME-040226/D	Trailing cam long right			
12	ME-040226/I	Trailing cam long left			
13	RODILLO 12X18	Roller 012X19			
14	RE-040202	Dowel to fix roller with spring			
15	PL-040200	Cam ring			
16	471 8	Ring DIN 471 08			
17	PS-0611	Cams stop iron ring of sowing variator			
18	BU-040200	Cames stop axle			
19	PL-040206	Stop socket cams			
20	471 12	Ring DIN 471 012			
21	ML-040101	Cames return sping			
22	PL-040207	Socket 020x025x10			
23	PL-040208	Socket 030x035x10			
24	FE-601004	Double bord joint 020x028x6			
25	FE-601005	Double bord joint 030x040x7			
26	HI-707005	Oil level viewfinder 1/2" gas			
27	FE-605037	Drive chain 1/2" sowing variator L-1092			
28	FE-605025	Fastening for chain 1/2"			

Omission de la position N°10

Ajuster la longueur de
chacun des 2 loquets



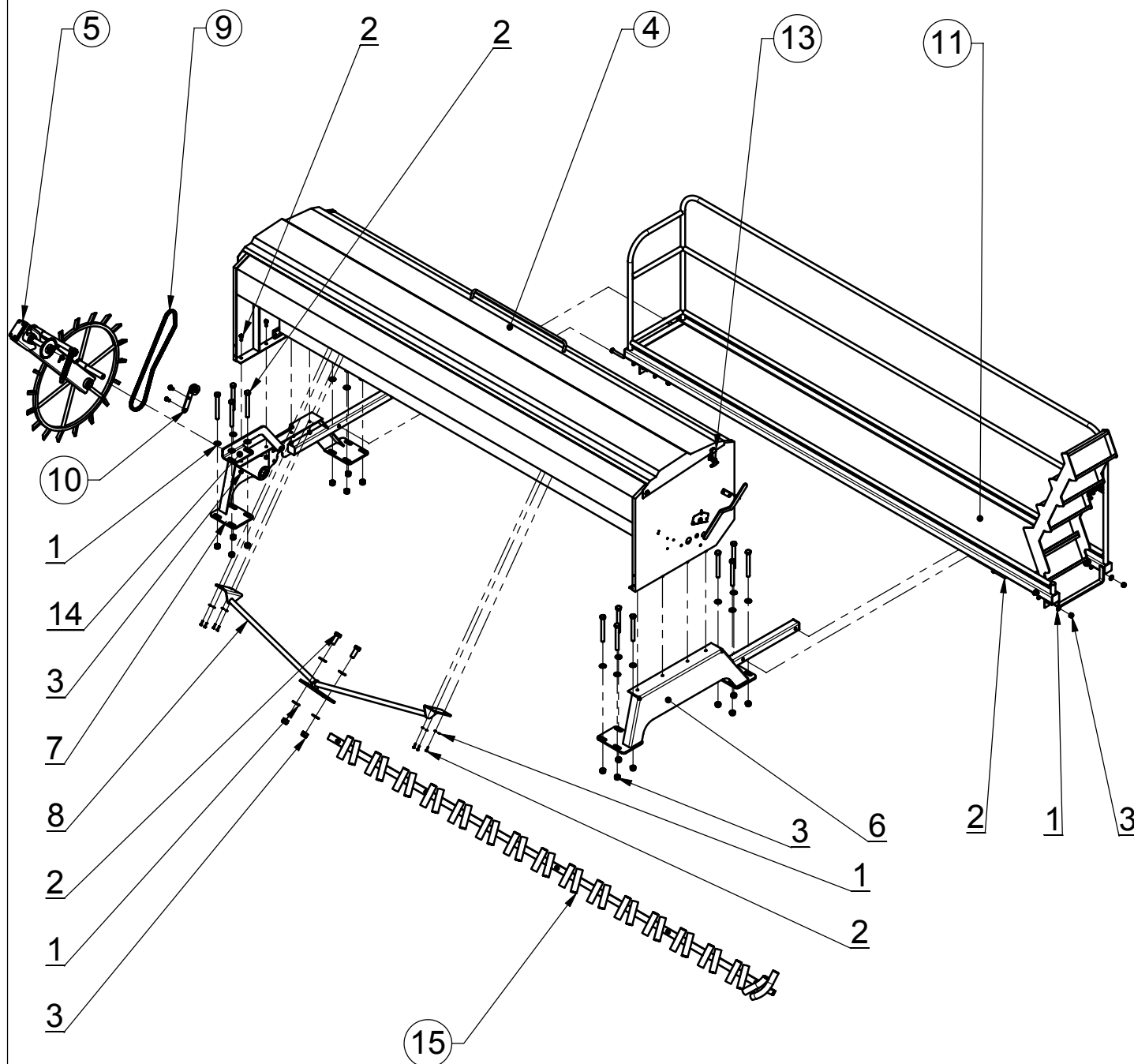
Distribution ramp kit DS1100

Reference : AGR3000-009

					Weight : 14,3 kg
Seep	Reference	Description	Qty.	Weight	Comments
1	AGR3000-601	Funnel protection plate	1	7,4	
2	CDF-38-43	Double-threaded clamp for hose	24	0,1	
3	TUS-40	polyurethane hose PVC wrap	24	0,21/m	
4	PL-050301	Support for funnel	25	0,02	
5	PL-050300	Funnel	25	0,04	

F – SPARE PARTS DS1400

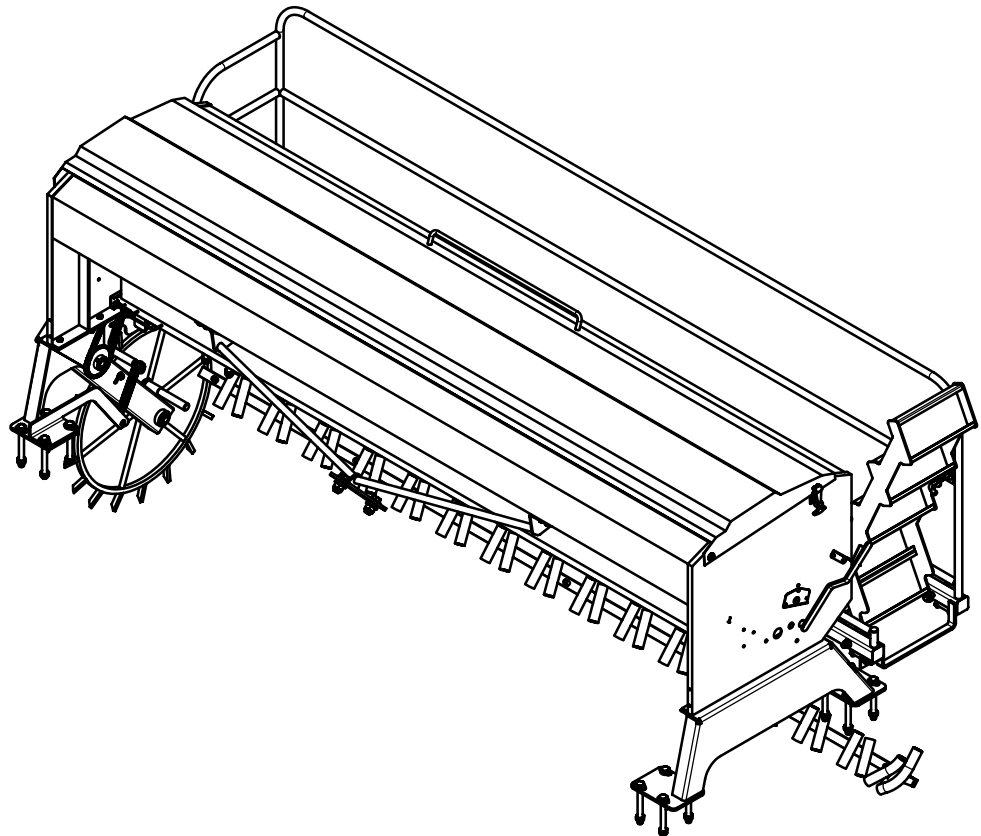


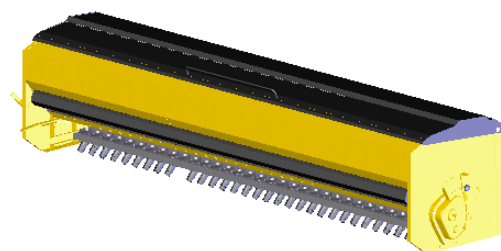
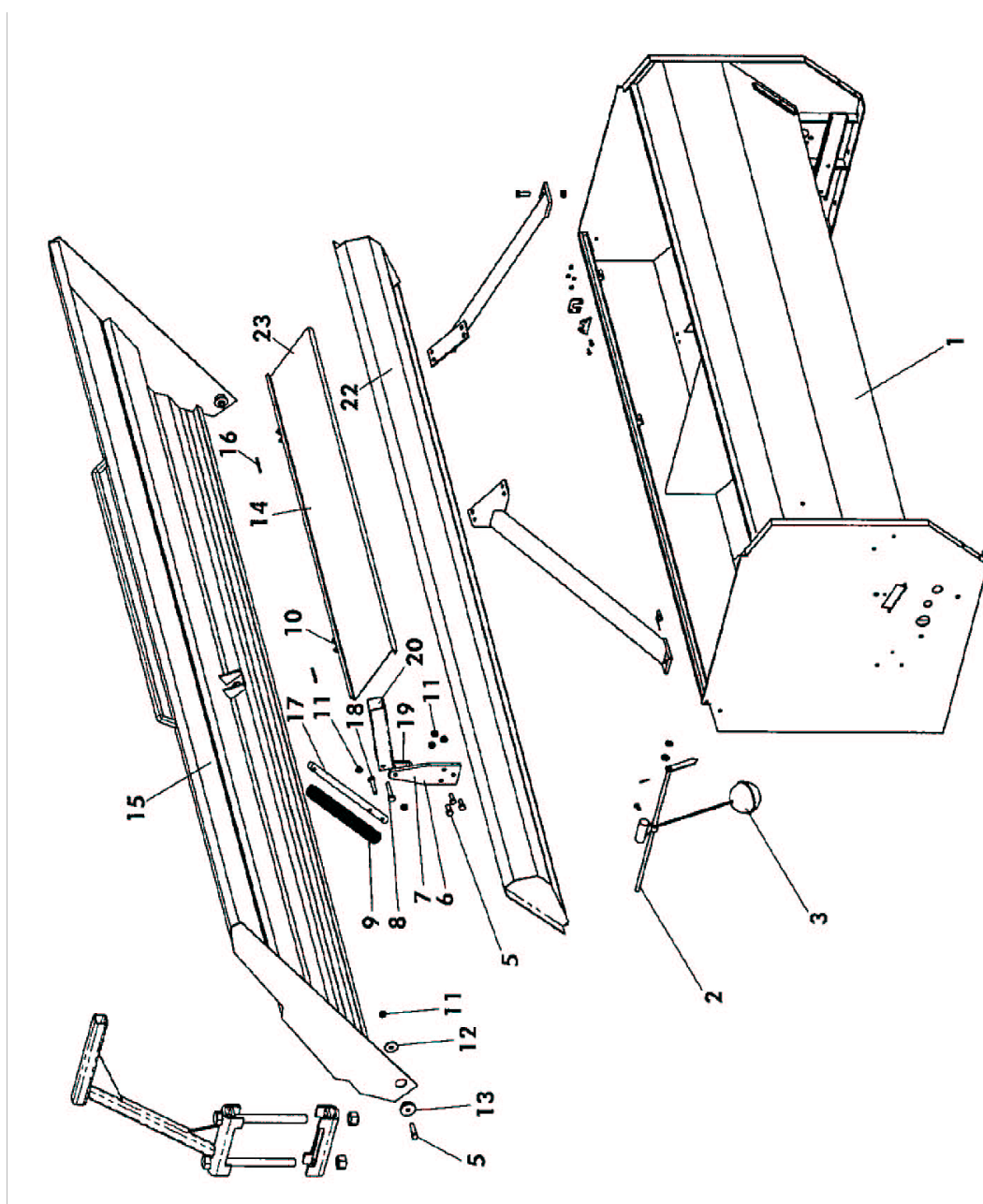


Seed drill DS1400 - 4.00m - for DOM S35

Reference : DS1400-400

					Weight : 668.20 Kg
Seep	Reference	Description	Qty.	Weight	Comments
1	R16M	Average washer Ø16 - yellow electro zinc	36	0.01	
2	VH12-030-FT	Screw H - M12 x 30 - 8.8 - bichromated yellow	40	0.045	
3	EN12	Nylstop Nut M12 - 8 - bichromated yellow	38	0.020	
4	DS1400-001	Hopper DS1400 -1400L 4.00m - 33 outlets	1	355.92	
5	SEM10-13-001	Sun wheel arms kit	1	44.29	
6	SEM10-28-507	Right support	1	29.79	
7	SEM10-28-512	Left support	1	35.26	
8	DS1400-505	Buckle guy	1	7.53	
9	SEM10-28-005	Variator drive chain	1	1.15	
10	SEM10-13-002	Tension- pulley arm kit	1	0.56	
11	DS1400-004	Gangway 4m	1	158.57	
12	SEM10-28-664	Casing cover	1	1.25	
13	DS610-13-003	Clip kit	2	0.51	
14	SEM10-28-671	Support sping	1	3.15	
15	DOM8-13-028	Sowing ramp kit Ø40	1	16.94	

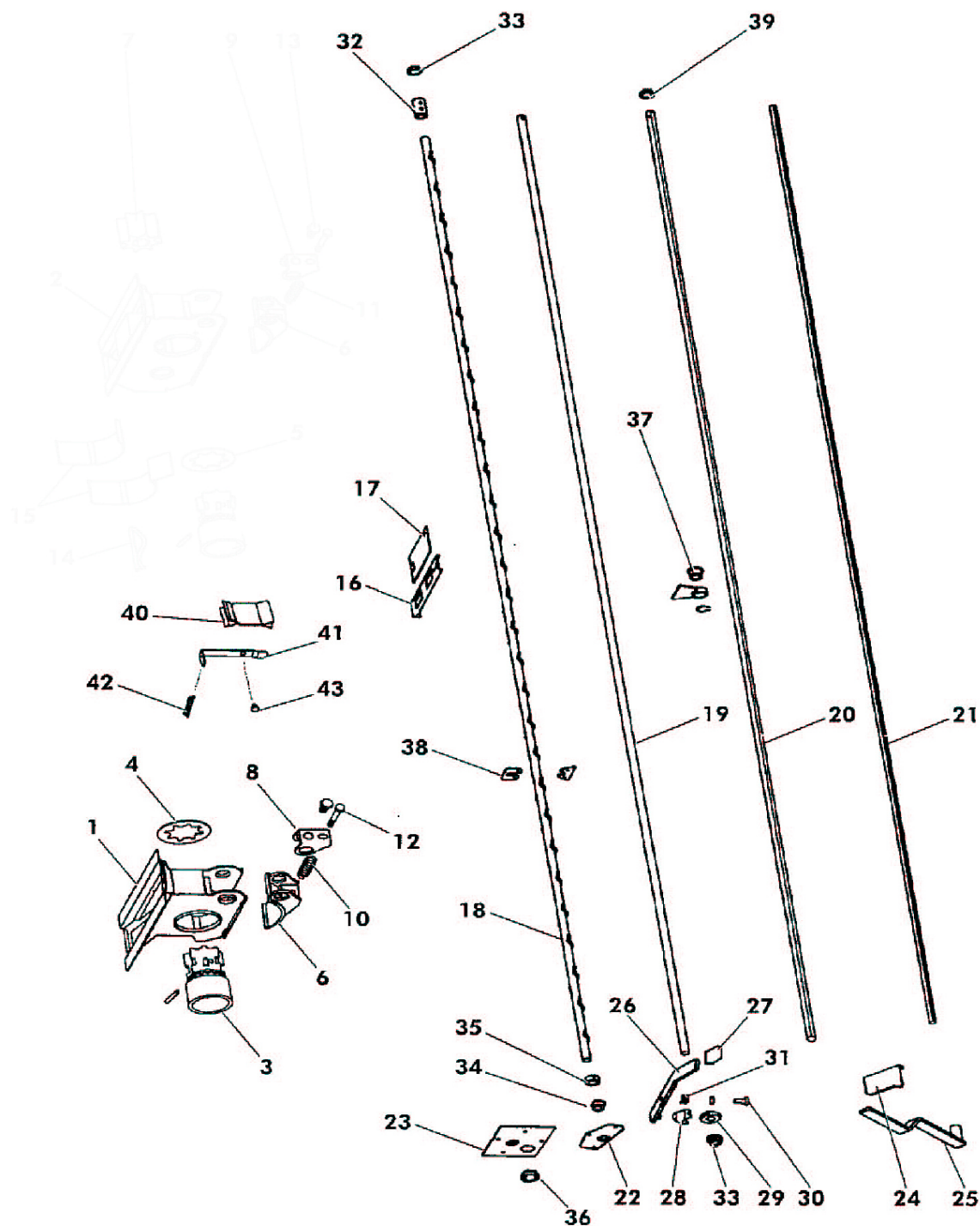




Hopper kit DS1400

Reference : DS1400-001

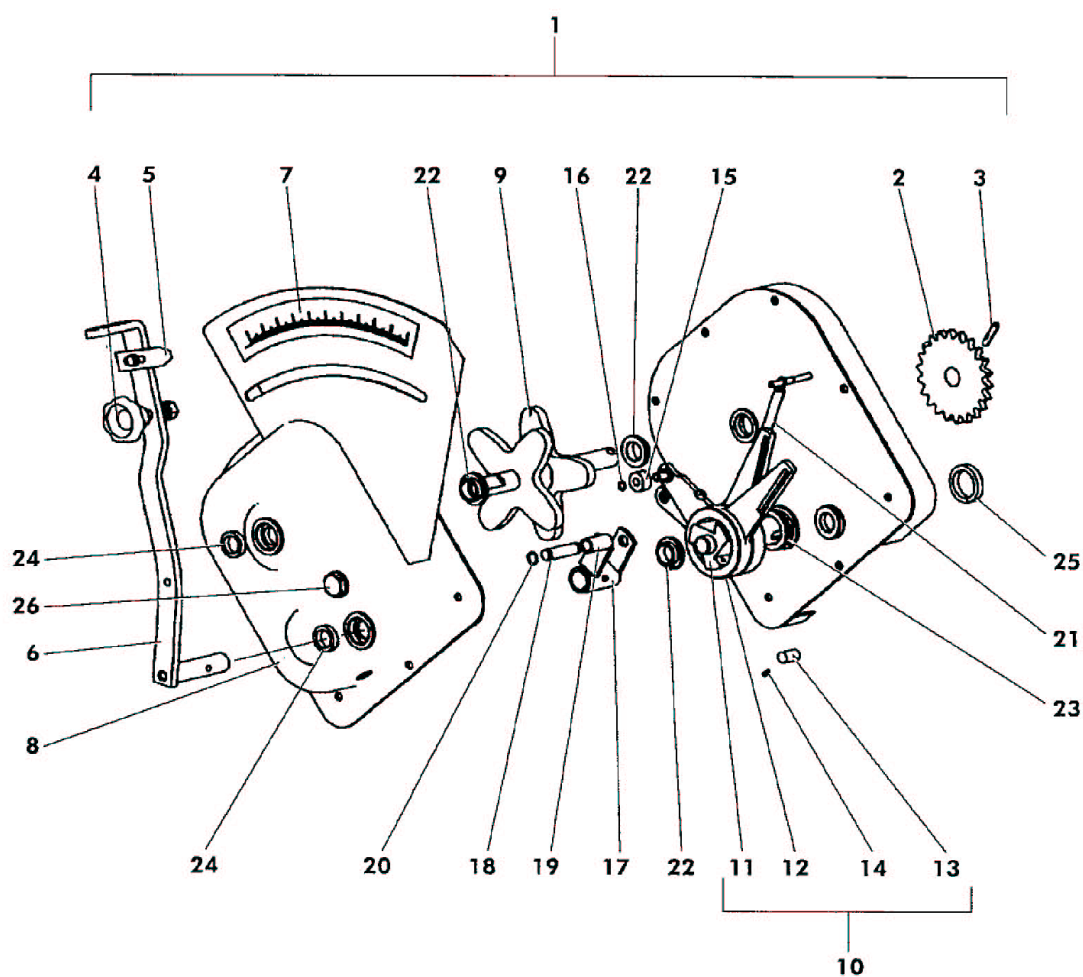
					Weight :
Seep	Reference	Description	Qty.	Weigh	Comments
1	PS-020508	Seed drill hopper 400/21			
2	PS-0508	Extra for agitator stirring rod support			
3	PS-020528	Hopper left side SD combi			
4	PX-020302/I	Oil drain train left cover			
5	933 8X35 8.8 B	Screw DIN 933 M-8x35 8.8 bichromate			
6	B06-49	Spring cover junction base			
7	PS-030514	Hopper cover spring junction SD			
8	931 8X45 8.8 B	Screw DIN 931 M-8x45 8.8 bichromate			
9	M01-101	Hopper cover spring SD			
10	H02-10	Iron ring for additionnal cover coupling			
11	985 8	Nut M8			
12	EE-030200	Washer Ø30			
13	BU-020700	Blocking bolt of hopper cover			
14	PS-030508	Hopper cover board SD 400			
15	PS-030504	Hopper cover SD 400			
16	94 5X36 BI	Winged split pin DIN94 M5x36 bichromate			
17	B03-222	Hopper cover sping bolt SD			
18	933 8X40 8.8 B	Screw DIN 933 M-8x40 8.8 bichromate			
19	E06-30	Cover spring junction angle			
20	TA-030501	Stop "U" of hopper cover SD			
21	C03-276	Hopper cover board 400			
22	MB-63	Oil drain tray 400			



Distribution kit DS1400

Reference : DS1400-005

					Weight :
Seep	Reference	Description	Qty.	Weigh	Comments
1	MD-11	Seed drill distributor			
3	PL-040201	Seeds distribution roller			
4	EE-040201	Grooved washer bichromate			
6	PL-040205	Cover of removable tray			
8	EE-040232	Removable tray support clip			
10	ML-020200	Removable tray hatch spring bichromate			
12	933 8X20B PUNTA	Screw DIN 933 M-8x20 with bichromate point			
16	EE-040228	Lock hatch bichromate			
16	EE-040229	Sliding hatch inoxydable			
17	EE-040230	Distributor replacement hatch			
18	TA-0402/16/17	Agitator axle			
19	PM-0408/09/10	Distribution axle			
20	TA-0506/07/08	Fertilizer distribution axle			
21	PM-0402/12/13	Removable axle			
22	EE-020215	Mixer support cover			
23	PX-020218	Cover ring of the hopper agitator axle			
24	EE-040219	Removable tray lever graduator			
25	PS-0410	Removable tray lever			
26	PS-0408	Distribution lever SD			
27	PL-040203	Plastic part for plate 30x8			
28	ME-040223	Small bearing blockage			
29	ME-040214	Small bearing Ø20 mechanized			
30	BU-040208	Distribution lever junction bolt			
31	ML-020202	Regulator of lever spring			
32	ME-040227	Agitator coupling rod tube			
33	PL-020204	Socket Ø20, 2xØ25x11			
34	PL-020205	Socket Ø20, 2xØ25x12 with groove			
35	ME-020202	Agitator socket stop ring			
36	PL-040208	Socket Ø30xØ35x10			
37	PL-020203	Ring socket of fertilizer axle			
38	EE-040215	Support bridge of agitator coupling rod			
39	FE-600012	Socket axle and Ø18xØ25x10			
40	EE-040303	Combined central separator of 2 tubes			
41	EE-050201	Stop plate			
42	ML-020100	Plate spring			
43	EE-040100	Rivet			

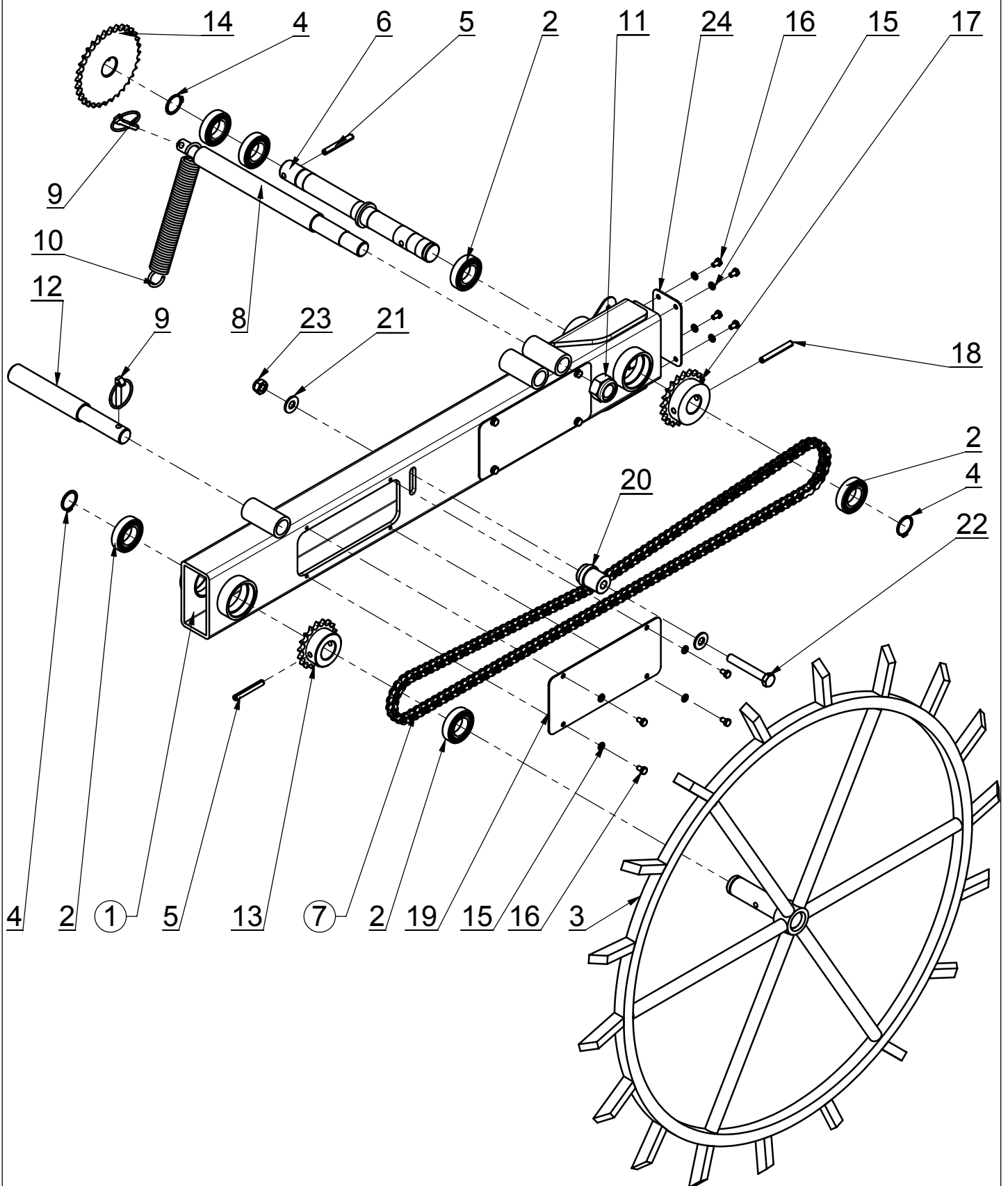


Sowing variator kit DS1400

Reference : DS1400-003

					Weight :
Seep	Reference	Description	Qty.	Weigh	Comments
1	MO-040600	Sowing variator SV-05			
2	ME-040402	Pinion 17Z for chain 1/2"			
3	1481 6X30 BI	Flexible split pin DIN 06X40 bichomate			
4	MV-09	Flounce with screw M-10 left threading			
5	PX-040204	Variator lever needle			
6	PS-0610	Sowing variator regulator lever			
7	AD-040200	Sowing variator graduation sticker			
8	PS-0618	Cover box of sowing variator with graduation			
9	TA-0618	Outer cross-piece of sowing variator			
10	MO-0605	Free sowing axles set			
11	RE-040201	Drive shaft of sowing variator			
12	ME-040226/D	Trailing cam long right			
12	ME-040226/I	Trailing cam long left			
13	RODILLO 12X18	Roller 012X19			
14	RE-040202	Dowel to fix roller with spring			
15	PL-040200	Cam ring			
16	471 8	Ring DIN 471 08			
17	PS-0611	Cams stop iron ring of sowing variator			
18	BU-040200	Cames stop axle			
19	PL-040206	Stop socket cams			
20	471 12	Ring DIN 471 012			
21	ML-040101	Cames return sping			
22	PL-040207	Socket 020x025x10			
23	PL-040208	Socket 030x035x10			
24	FE-601004	Double bord joint 020x028x6			
25	FE-601005	Double bord joint 030x040x7			
26	HI-707005	Oil level viewfinder 1/2" gas			

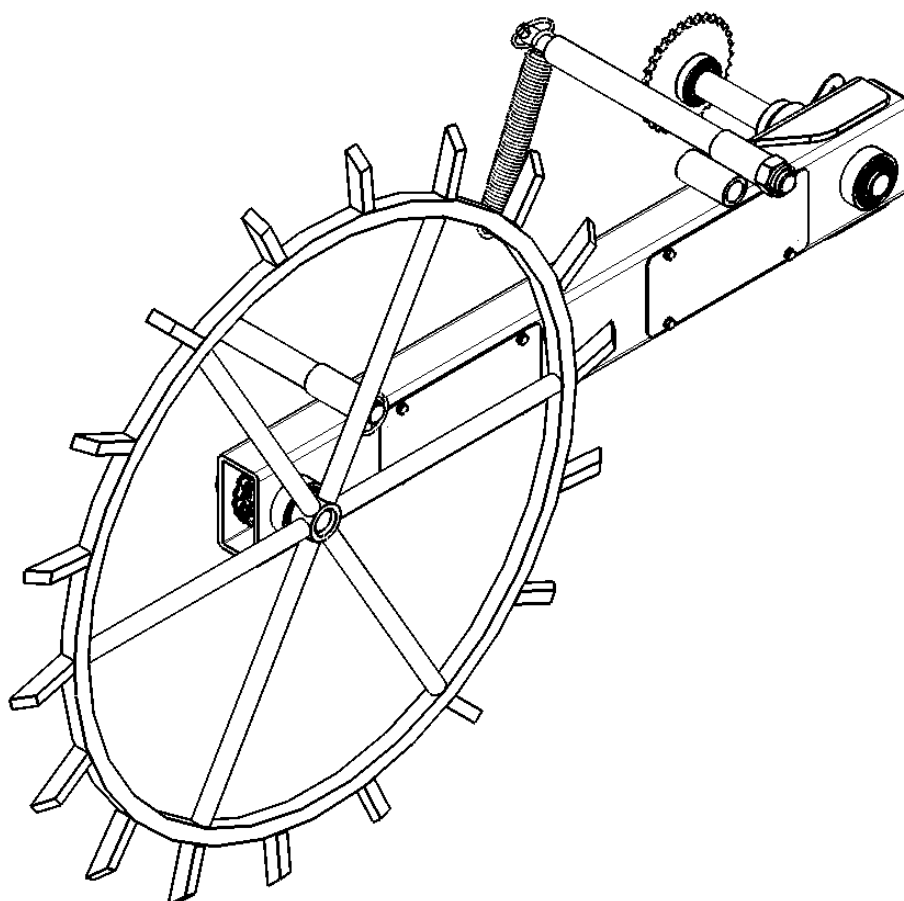
**G – SPARE PARTS COMMON
FOR ALL MECHANICAL SEED DRILLS**

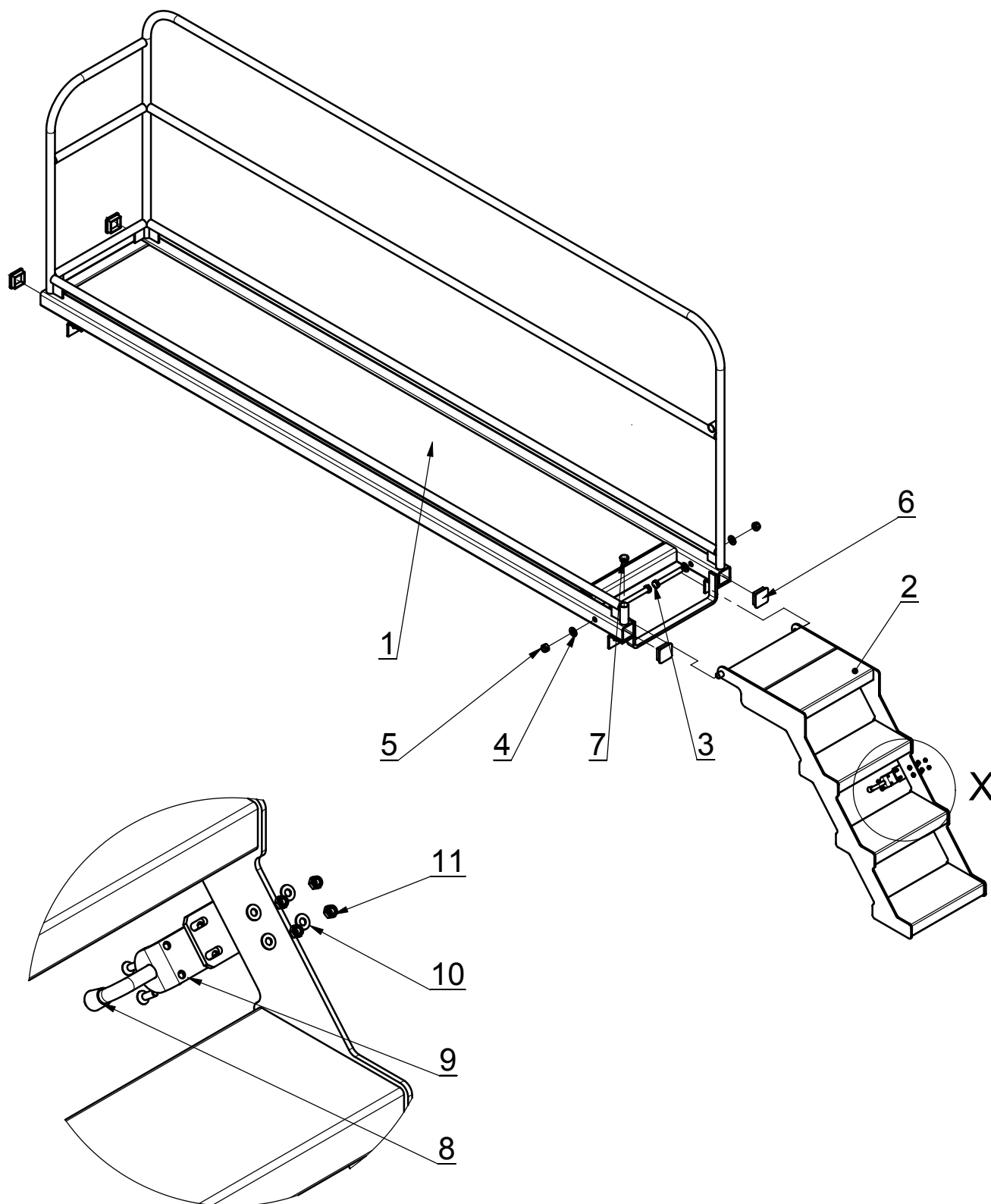


Sun wheel arms kit

Reference : SEM02-13-001

					Weight : 44.29 Kg
Seep	Reference	Description	Qty.	Weight	Comments
1	SEM10-28-508	Sun wheel arms	1	17.56	
2	roul-515	Roll-on bearing Ø30x55x13 with joints	6	0.12	
3	SEM10-13-501	"Sun" wheel	1	15.92	
4	CE29-1,5	External circlip 29x1,5	3	0.003	
5	GE08-60	Elastic pin Ø8x60	2	0.01	
6	SEM10-28-681	Outer shaft for sun wheel	1	1.71	
7	SEM10-13-003	Sun wheel drive chain	1	1.56	
8	SEM10-28-658	Lag stop axle	1	1.84	
9	GC-8	Bolt clip Ø8	2	0.03	
10	GRG2000000	Traction spring Ø4 - Ø30 - 210	1	0.38	
11	EN24	Nylstop Nut M24 - 8 - bichromated yellow	1	0.132	
12	SEM10-28-676	Lag stop axle	1	1.17	
13	PIGN12,7-18-2	Pinion 08BD1-18 teeth-12,7-30	1	0.452	
14	PIGN12,7-32-3	Pinion 08BD1 - 32 teeth - 12,7 - 30	1	0.921	
15	RE6	Washer Ø6 - elastic bichromated yellow	12	0.001	
16	VH6-010-FT	Screw H - M6 x 10 - 8.8 - bichromated yellow	12	0.005	
17	PIGN12,7-21-2	Pinion 08B1-21 teeth- 12,7- Ø30	1	0.705	
18	GE08-65	Elastic pin Ø8x65	1	0.02	
19	SEM04-13-619	Covering iron sheet	2	0.39	
20	SEM04-13-614	Chain tension pulley	1	0.03	
21	R12M	Average washer Ø12 - yellow electro zinc	2	0.01	
22	VH12-080	Screw H - M12 x 80 - 8.8 - bichromated yellow	1	0.089	
23	EN12	Nylstop Nut M12 - 8 - bichromated yellow	1	0.020	
24	SEM04-13-617	Covering screen	1	0.11	



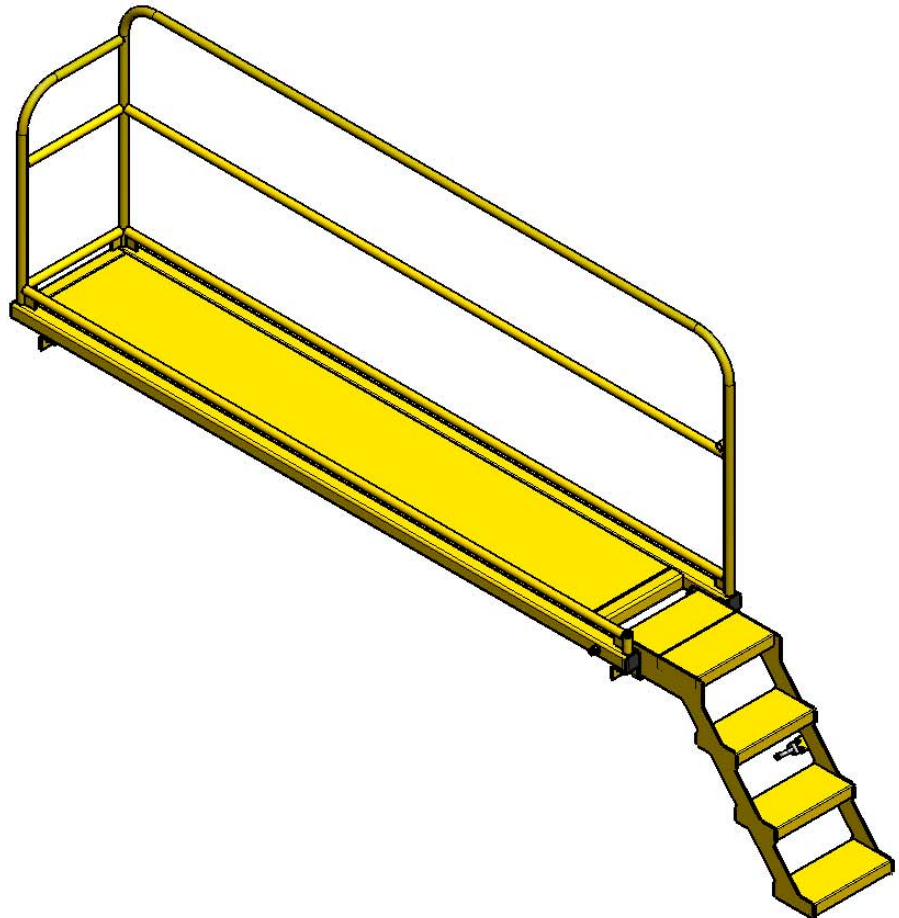


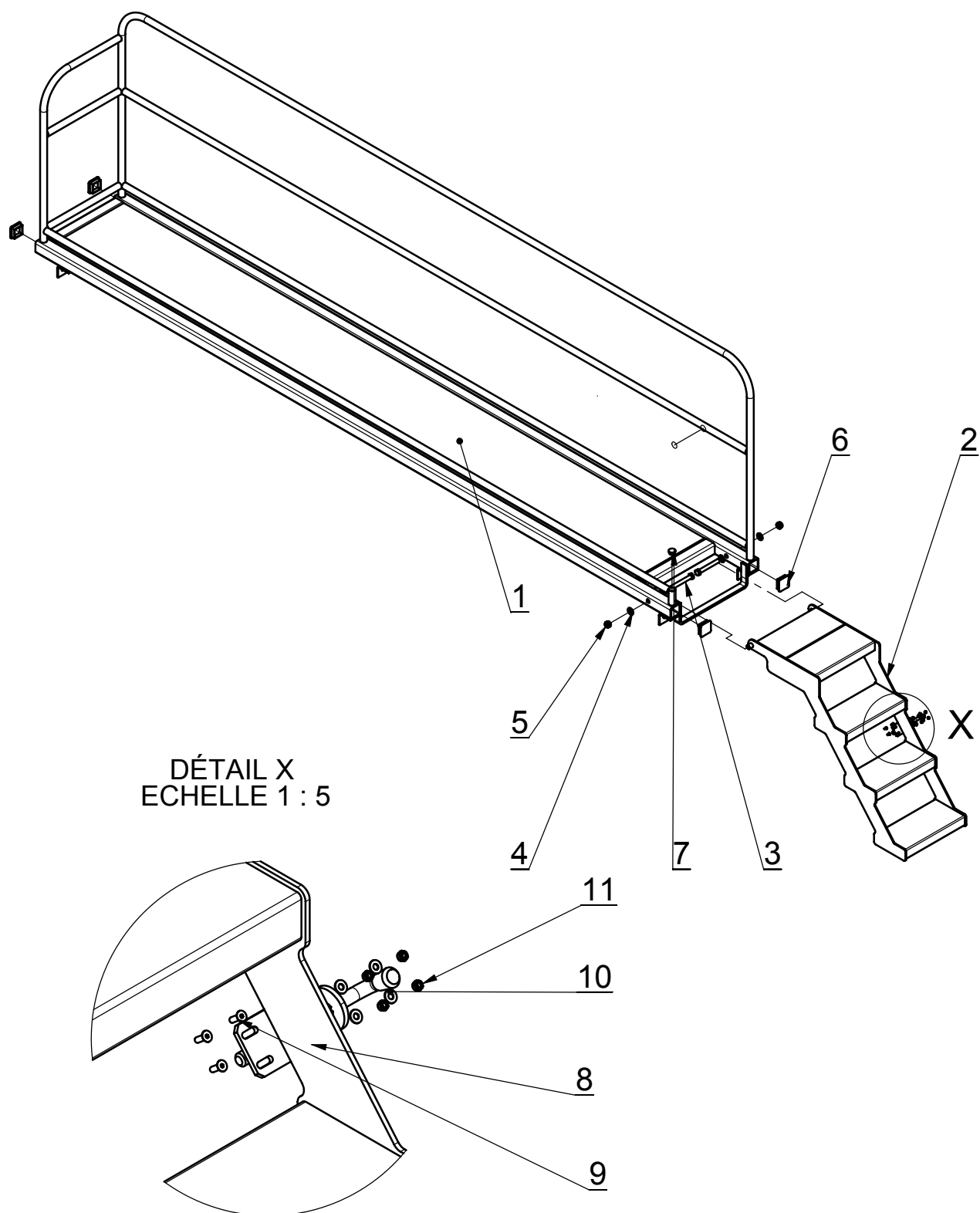
DÉTAIL X
Echelle 1 : 5

Gangway kit

Reference : SEM10-28-004

					Weight : 126.93 Kg
Seep	Reference	Description	Qty.	Weight	Comments
1	SEM10-28-509	Gangway	1	105.80	
2	SEM10-28-510	Ladder	1	20.02	
3	VH16-120	Screw H - M16 x 120 - 8.8 - bichromated yellow	2	0.228	
4	R16M	Average washer Ø16 - yellow electro zinc	4	0.01	
5	EN16	Nylstop Nut M16 - 8 - bichromated yellow	2	0.039	
6	CT60605	Tube-mask 60x60x5	4	0.03	
7	CT30-2	Tube-mask Ø30x1,5	1	0.004	
8	VR13-30	Spring lock Ø13 Lg30	1	0.37	
9	VFHC6-020-FT	Screw FHc - M6 x 20 - 8.8 - bichromated yellow	4	0.01	
10	R6M	Average washer Ø6 - yellow electro zinc	4	0.00	
11	EN6	Nylstop Nut M6 - 8 - bichromated yellow	4	0.00	

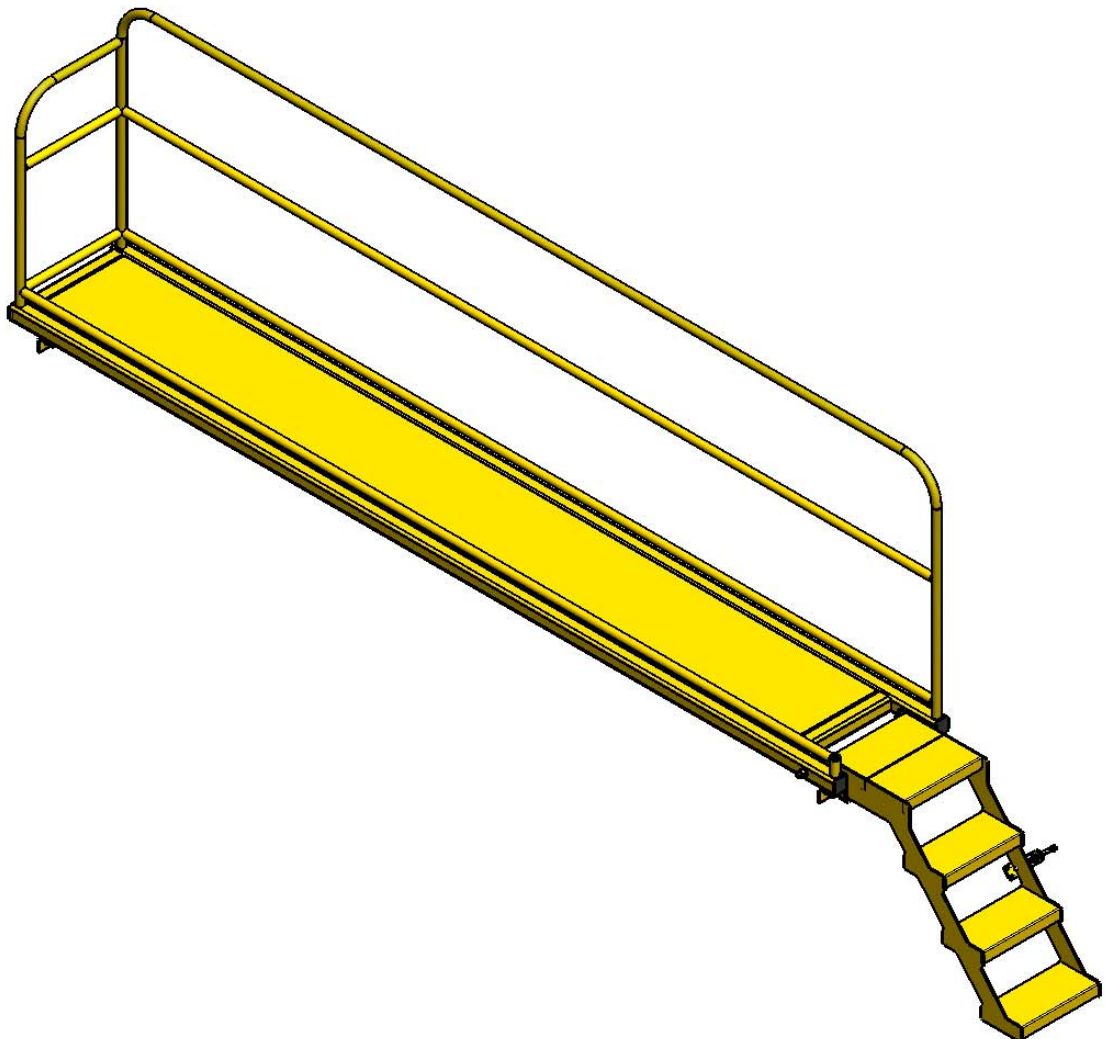


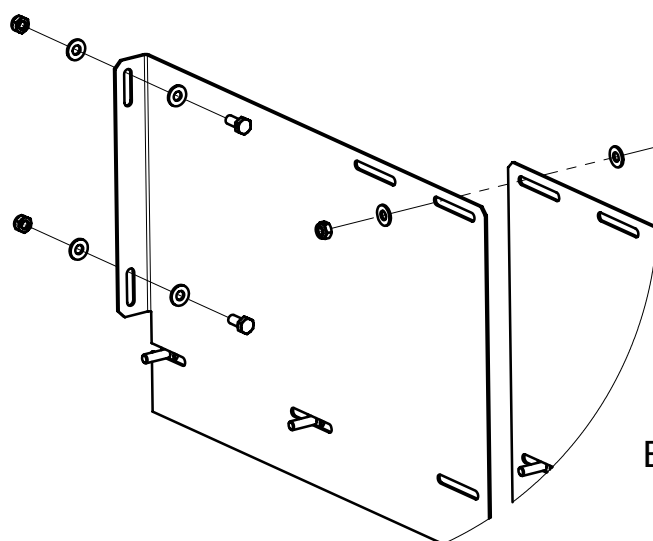
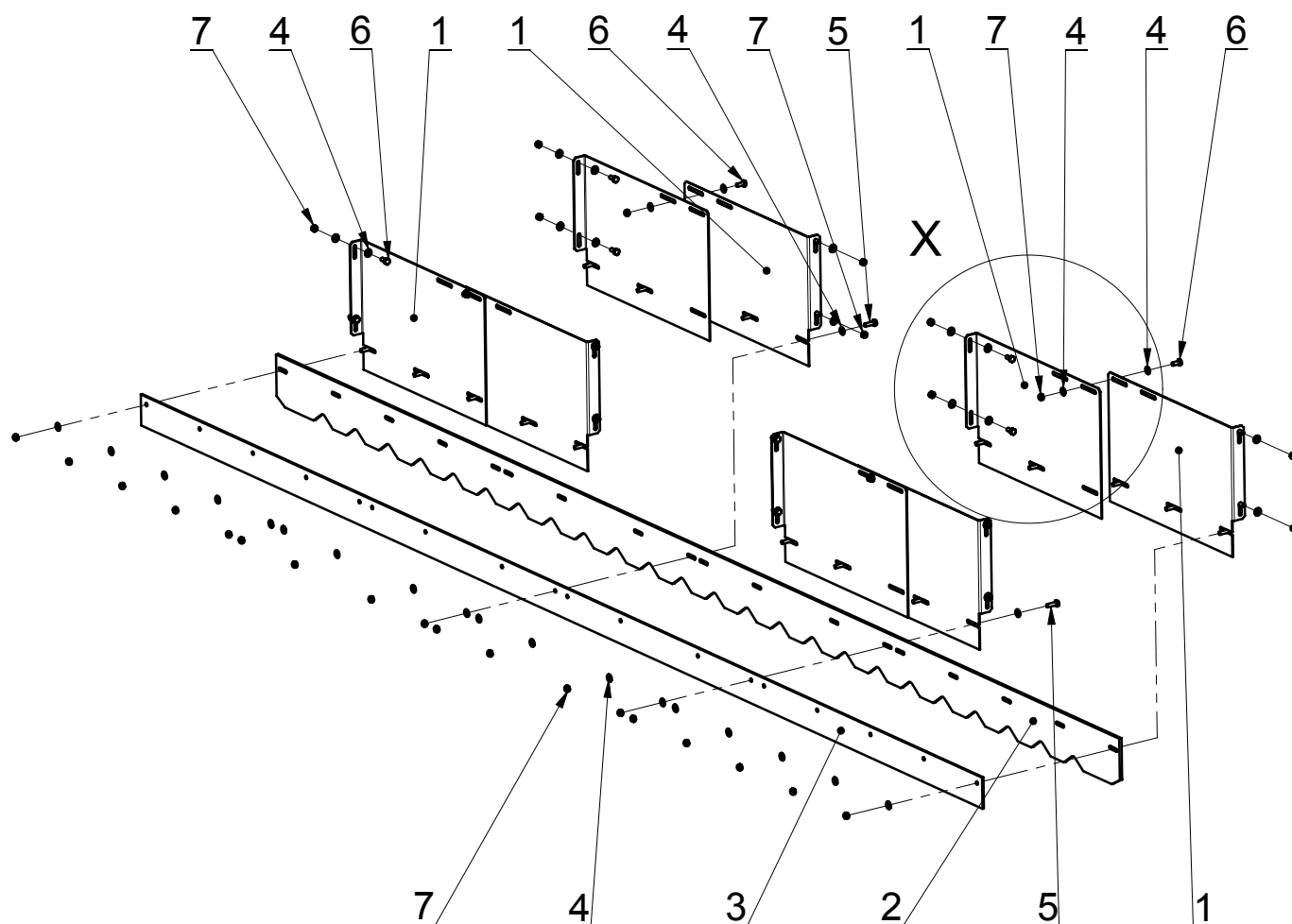


Gangway 4m

Reference : DS1400-004

					Weight : 158.56 Kg
Seep	Reference	Description	Qty.	Weight	Comments
1	DS1400-504	Gangway	1	137.43	
2	SEM10-28-510	Ladder	1	20.02	
3	VH16-120	Screw H - M16 x 120 - 8.8 - bichromated yellow	2	0.228	
4	R5M	Average washer Ø5 - yellow electro zinc	8	0.00	
5	EN5	Nylstop Nut M5 - 8 - bichromated yellow	6	0.001	
6	CT60605	Tube-mask 60x60x5	4	0.03	
7	CT30-2	Tube-mask Ø30x1,5	1	0.004	
8	VR13-30	Spring lock Ø13 Lg30	1	0.37	
9	VFHC5-016-FT	Screw FHc - M5 x 16 - 8.8 - bichromated yellow	4	0.00	



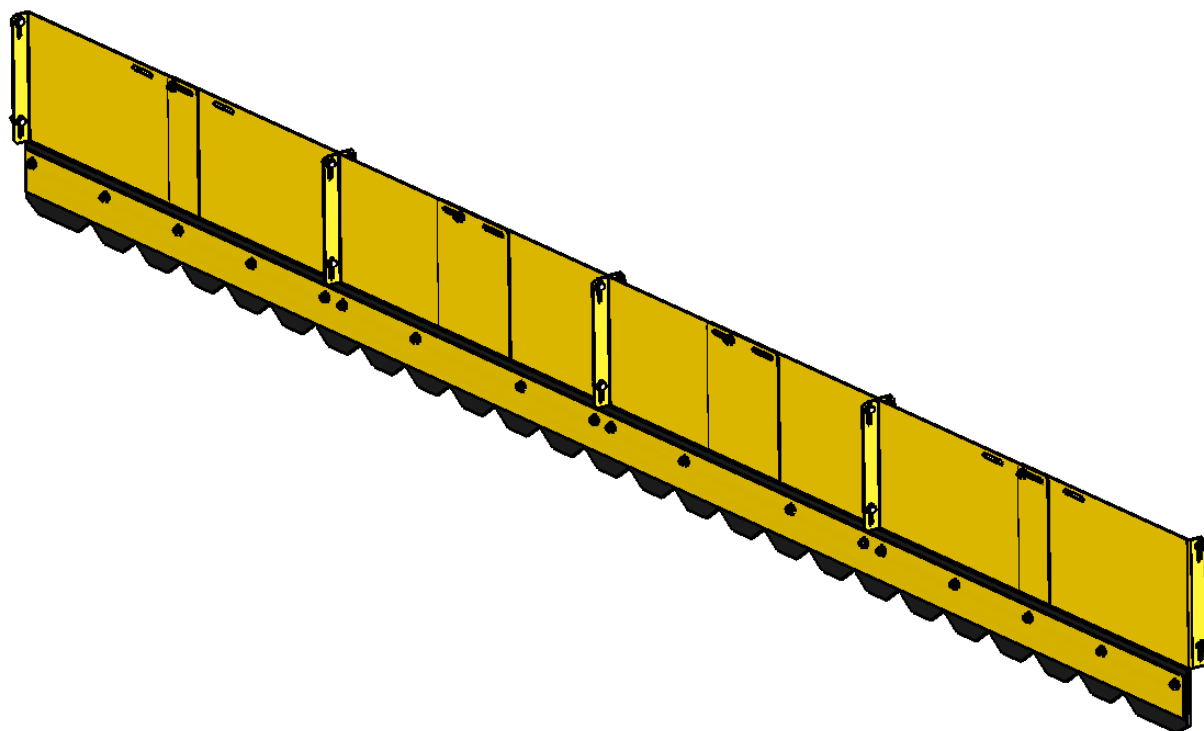


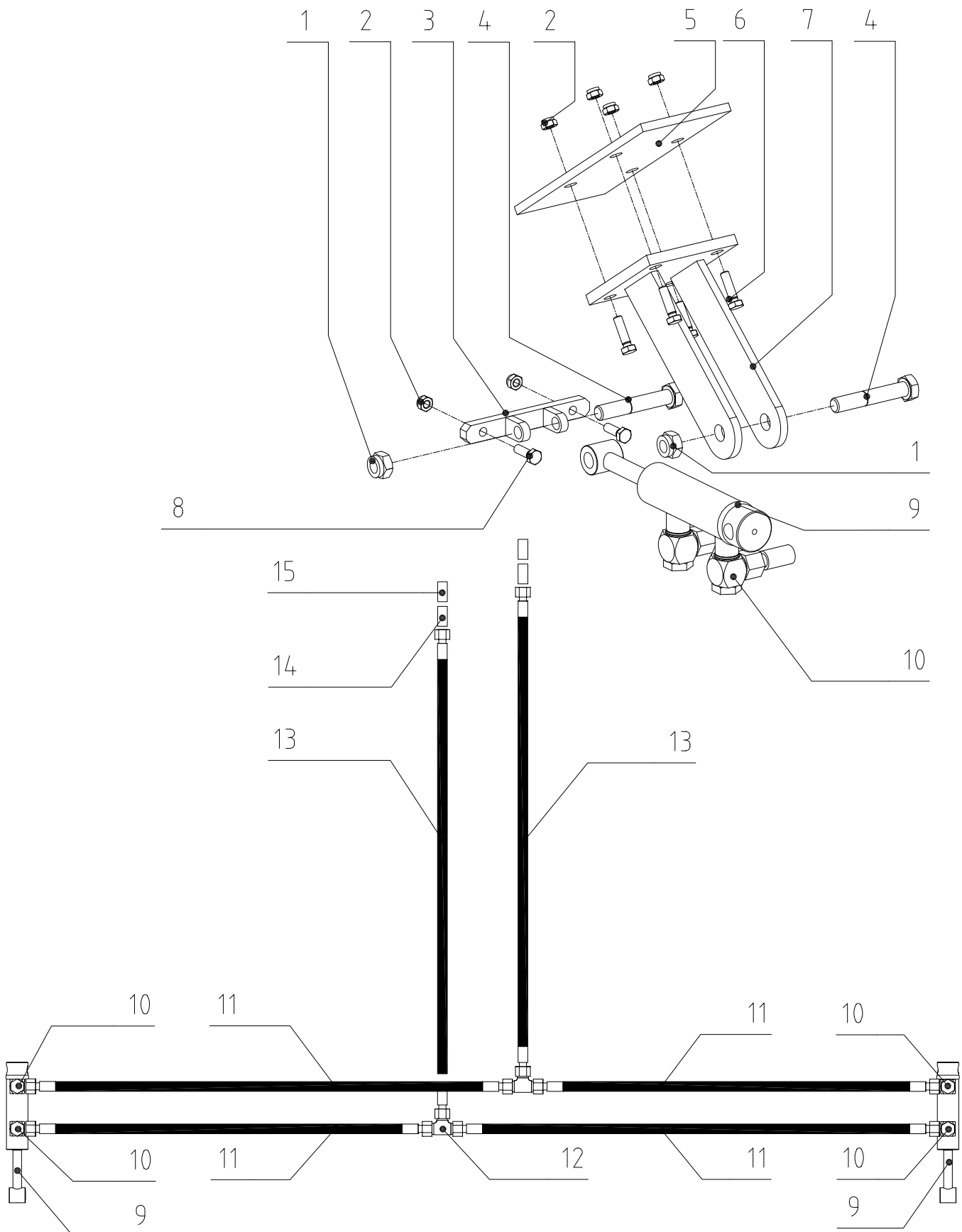
DÉTAIL X
ECHELLE 1 : 5

Hopper separation kit

Reference : DS610-013

					Weight : 14.65 Kg
Seep	Reference	Description	Qty.	Weight	Comments
1	DS610-13-622	Seed-drill separation	8	1.17	
2	DS610-13-624	Black shaped joint	1	1.16	
4	R6M	Average washer Ø6 - yellow electro zinc	76	0.00	
5	VH6-014-FT	Screw H - M6 x 14 - 8.8 - bichromated yellow	19	0.006	
6	EN6	Nylstop Nut M6 - 8 - bichromated yellow	38	0.003	
7	DS610-13-625	Fixation plate	1	3.71	
8	VH6-020-FT	Screw H - M6 x 20 - 8.8 - bichromated yellow	19	0.007	

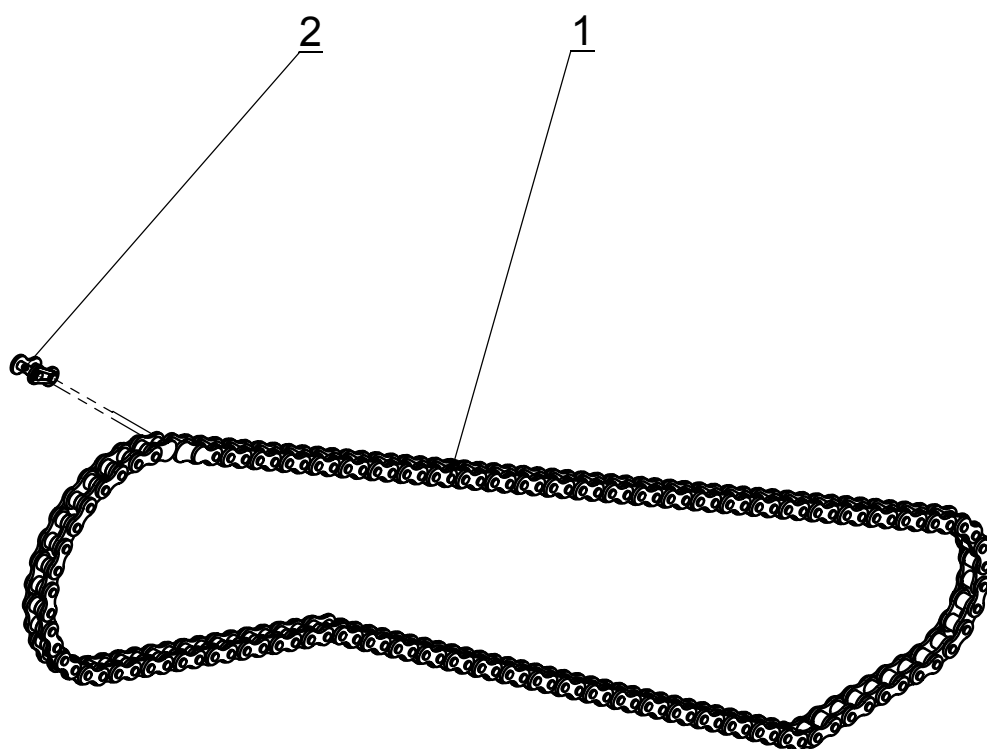




Field marking kit

Reference: DS610-010

See No.	Reference	Description	Qty	Weight U	Comments
1	EN14	Nylstop Nut M14 - 8 - bichromated yellow	4	0,03	
2	EN8	Nylstop Nut M8 - 8 - bichromated yellow	12	0,01	
3	DOM8-19-512	Front clevis mounting	2	0,23	
4	VH14-080	Screw H - M14 x 80 - 8.8 - bichromated yellow	4	0,12	
5	DOM8-19-617	Fixation plate	2	1,54	
6	VH8-030	Screw H - M8 x 30 - 8.8 - bichromated yellow	8	0,02	
7	DOM8-19-513	Rear clevis mounting	2	1	
8	VH8-025	Screw H - M8 x 25 - 8.8 - bichromated yellow	4	0,02	
9	V160320060	Lift cylinder double effect	2	1	
10		BANJO connection 8 - 1/4"	4	0,19	
11	2D0097ELEL	Hose 0,97 m with female end ETC8	4	0,5	
12	TE8S	Tee connection Din 8S	2	0,2	
13	2D0150ELEL	Hose 1,5 m with female end ETC8	2	0,75	
14		Male Connection with ball 1/2	2	0,2	
15		Connection UM8 15/21	2	0,2	
				14 Kg	

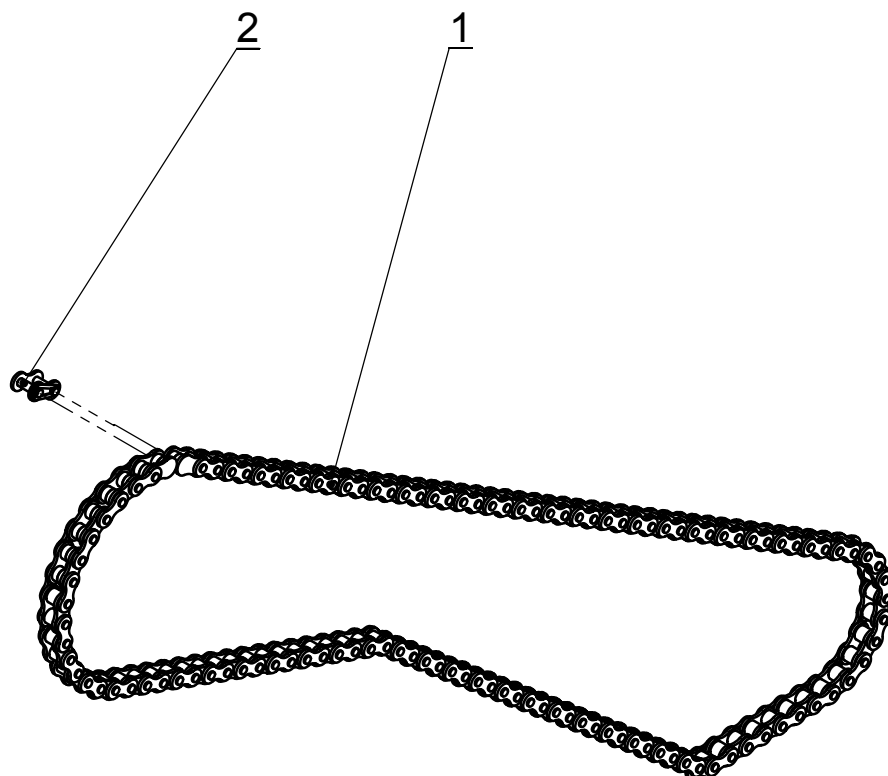


Variator transmission chaine

Reference : DS610-13-002

					Weight : 1.29 Kg
Seep	Reference	Description	Qty.	Weight	Comments
1	CRS-08B1-CS	Chain - DIN8187 - thread 12.7 - 133 links	1	1.28	
2	CRS-08B1-AR	Fast,simple clip12.7	1	0.01	



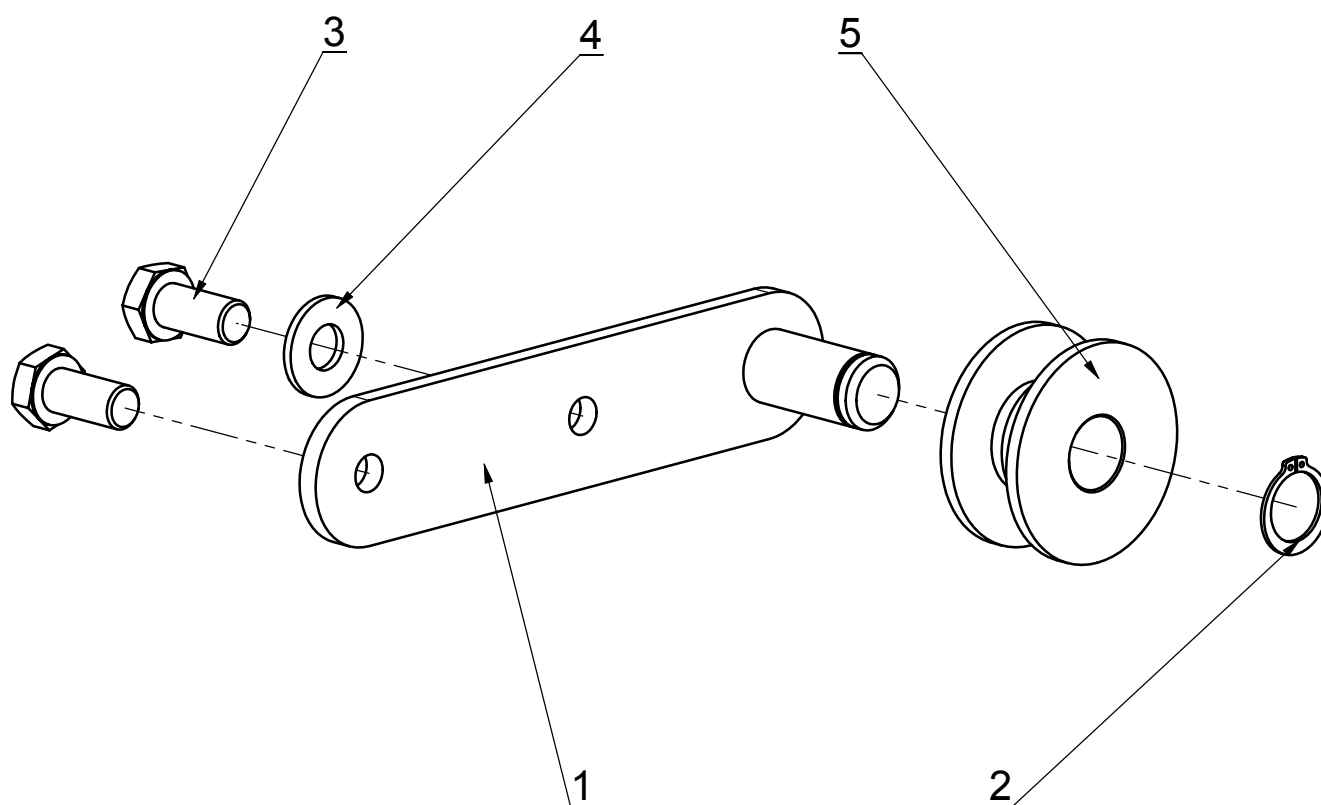


Variator drive chain

Reference : SEM10-28-005

					Weight : 1.15 Kg
Seep	Reference	Description	Qty.	Weight	Comments
1	CRS-08B1-CS	Chain - DIN8187 - thread 12.7 - 119 links	1	1.14	
2	CRS-08B1-AR	Fast,simple clip12.7	1	0.01	

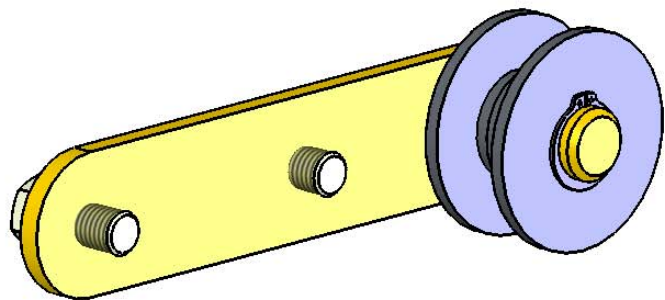


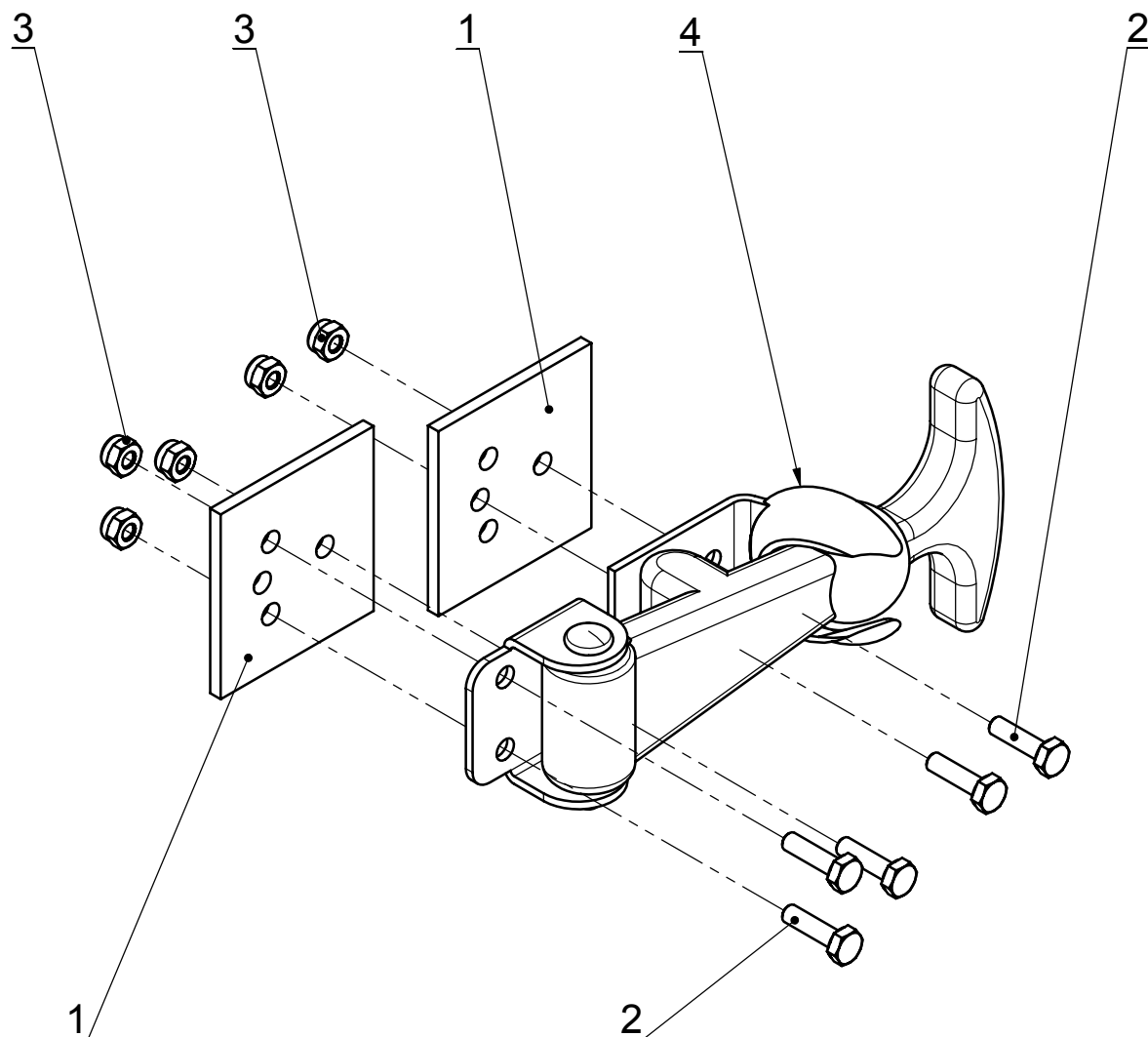


Tension- pulley arm kit

Reference : SEM10-13-002

					Weight : 0.56 Kg
Seep	Reference	Description	Qty.	Weight	Comments
1	SEM10-28-511	Tension pulley arm	1	0.43	
2	CE20-1,2	External circlip 20x1,2	1	0.002	
3	VH12-025-FT	Screw H - M12 x 25 - 8.8 - bichromated yellow	2	0.040	
4	R12M	Average washer Ø12 - yellow electro zinc	1	0.01	
5	SEM05-13-618	Chain tension pulley	1	0.03	





Carter fixing kit

Reference : DS610-13-003

					Weight : 0.51 Kg
Seep	Reference	Description	Qty.	Weight	Comments
1	S8385	Clip	1	0.40	
2	ACC526	Lid fasteners metal plate	2	0.05	
3	VH4-015-FT	Screw H - M4 x 15 - 8.8 - bichromated yellow	5	0.002	
4	EN4	Nylstop Nut M4 - 8 - bichromated yellow	5	0.00	

